



XK SPARE PARTS



CONVEYOR AND PALLET HANDLING SYSTEMS

Content

End drive unit	2
End drive unit, heavy-duty	5
End drive unit, direct drive.....	7
End drive unit, overhead motor	9
Double drive unit (c/c 106 mm).....	12
Double drive unit (c/c 150-350 mm)	15
Catenary drive unit.....	19
Catenary drive unit, heavy-duty	22
Horizontal bend drive unit.....	26
Idler unit	30
Complete wheel bend	33
Pallet locating station and pallet stop, type A, XKPX 175 A	35
Pallet locating station and pallet stop, type A/B, XKPD 32x15 LA/LB	36
Pallet stop device, type A/B, XKPD 32x15 A/B ...	37
Spare parts Slide rail - XK	41
Spare parts Chains - XK	43
Spare parts Guide rail cover - XK	45
Product designations in alphanumeric order	47

© Copyright FlexLink 2011

The contents of this publication are the copyright of the publishers and may not be reproduced (even extracts) unless permission is granted. Every care has been taken to ensure the accuracy of the information but no liability can be accepted for any errors or omissions. The right is reserved to make design modifications.

Patents

Essential parts of the FlexLink product range are protected by patents and design regulations.
Drawings are made to European standards.

Catalogue instructions

1. How to read the catalog: Open the catalog and from the pictorial index locate the group in which the part you want to find is present. Turn over to the concerned page number (as given by pictorial index). Now find out the figure of the part you wish to order. Jot down the part number against that particular figure number from the text. In case, if you have the part number and you need the other details, the part index can be used. The part index (at the end of the catalog) will give you the figure and page number of the part you wish to order.

2. How to order spare parts: The part number and the description of the part required should be invariably mentioned in the order as per the catalog text. The latest part number as conveyed through our service circulars should only appear on the order. In case of ordering colored components, color code of the components should be mentioned. The quantity shown against the part number is the quantity per unit for that group so that particular quantity should be multiplied by the number of sets required.

3. Abbreviations: The following abbreviations are used in this catalog:

assly.	Assembly
V	Volts
N.I.	Not illustrated
W	Watt
Comp.	Complete
Fr	Front
Std.	Standard
L	Length
A/t.	Alternate
Rr	Rear
L.H.	Left hand
R.H.	Right hand
AR	As required
<i>(Part number)</i> Part number presented in "parantheses" and in Italic character style	Parts are included in a Spare parts kit.
*)	These items can only be purchased as part of a kit and when an item has an * the corresponding item always is placed between brackets (..) see above.
Recomended Spare part	Parts which are usually kept in stock and have short turnaround (See item 4)

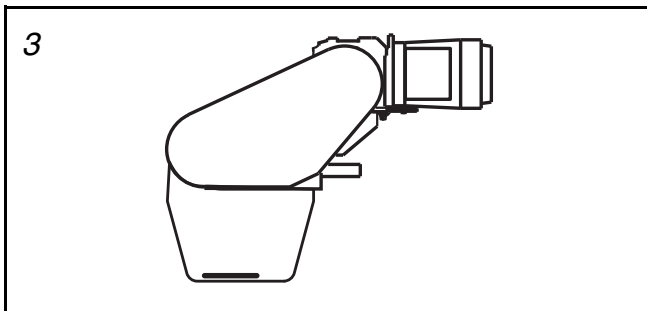
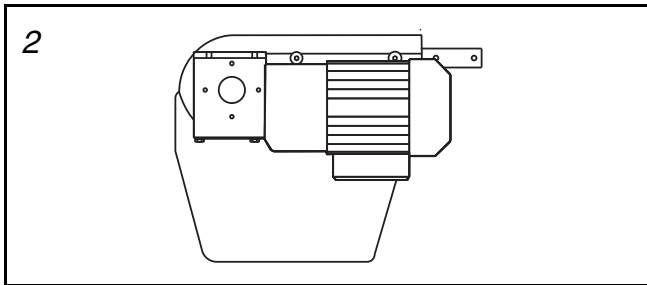
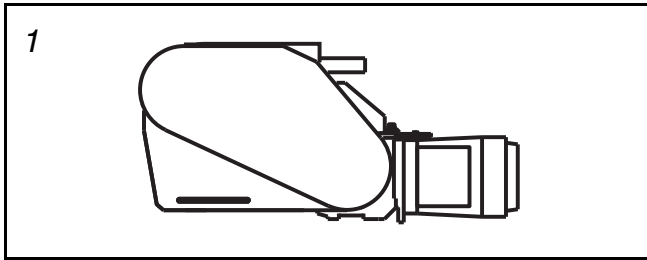
4. Recomendded Spare parts:

Several items of the complete spare parts overview are ear-marked as recommended spare parts. FlexLink advises its customers to purchase and stock these specific items for replacement in case of failure of the original item. The recommended spares are limited to only these items for which the cost of buying is in a fair relationship to the risk (i.e. probability * impact) of sudden failure. It merely consists of wear parts and some electrical and pneumatic components.



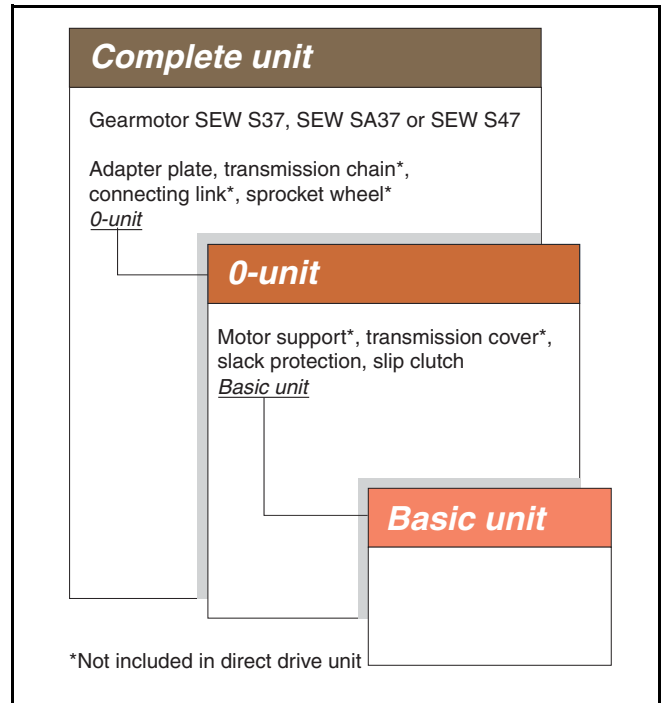
End drive unit - XK

Contents



Revision list

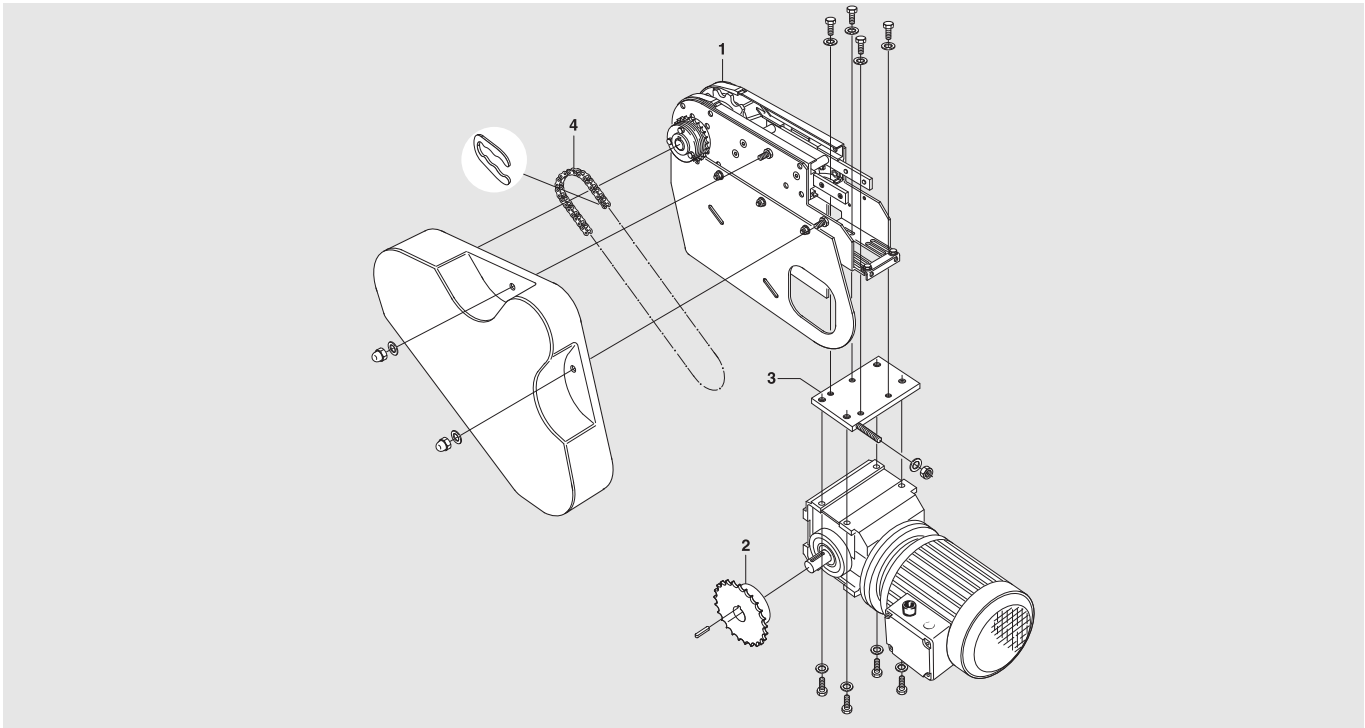
Doc ID	Date	Type of revision	Entered by
XK001-E1	98-10-14	New version	Enator Inforum
XK001-E2	00-05-15	Part No change	AerotechTelub
XK001-E3	00-06-14	End drive unit, direct drive XKEB HLP/HRP added	AerotechTelub
XK001-E4	00-09-15	XKEB HLP/HRP: changed to XKEB LP/RP	AerotechTelub
XK001-E5	00-10-04	P. 11 XKEB 0 LU/RU del.	AerotechTelub
XK001-E6	01-04-24		
XK001-E7	08-10-30	Spare part kits added	JE
XK001-E8	09-03-19		JE
XK001-E9	10-02-12	Updated (page 4)	JE
XK001-E10	10-02-16	Slip clutch SP kit deleted	JE
XK001-E11	10-06-22	Added new col.	JE



End drive unit

Complete unit – XKEB _L/R/LA/RA

For SEW S37 gearmotor



Item	Description	Part No	Qty	Comments	Recommended Spare parts
1	0-unit (left-hand version)	XKEB 0 L/LA	1	See next page for details	
	0-unit (right-hand version)	XKEB 0 R/RA	1	See next page for details	
	Motor alternative, see Drive unit guide 5014				
2	Sprocket wheel 1/2" including set screw		1	See table below	X
3	Adapter plate including bolts and washers	3924197	1	For SEW S37 gearmotor	
	Adapter plate	3924455	1	Blind adapter plate	
4	Transmission chain 1/2" including connecting link	3921638	1	ISO/R- 1967- 08B- 1 (ISO)	X
	Transmission chain 1/2" including connecting link	5044948	1	ISO/R- 1967- 08A- 1 (ANSI)	X

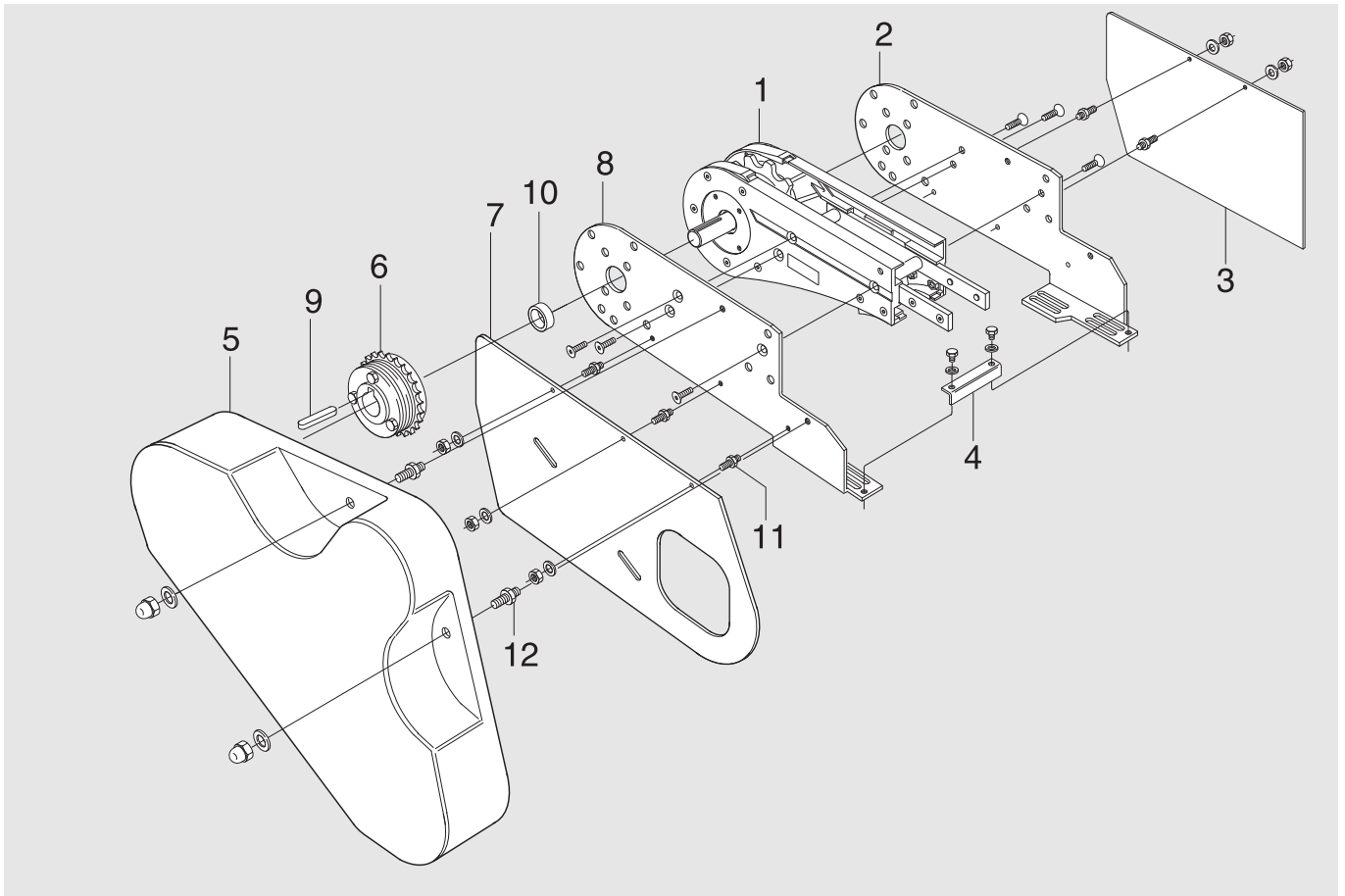
Important

Items 2-4 must be ordered separately when ordering a 0-unit (item 1). The sprocket wheel (item 2) should be specified in accordance with the following table:

Sprocket wheel 1/2"	Part No (SEW)
z ₁ =19	3924438
z ₁ =21	3924439
z ₁ =23	3924440
z ₁ =25	3921258
z ₁ =15 ANSI	5044935
z ₁ =17 ANSI	5044936
z ₁ =19 ANSI	5044937
z ₁ =21 ANSI	5044938
z ₁ =23 ANSI	5044939
z ₁ =25 ANSI	5044940

End drive unit

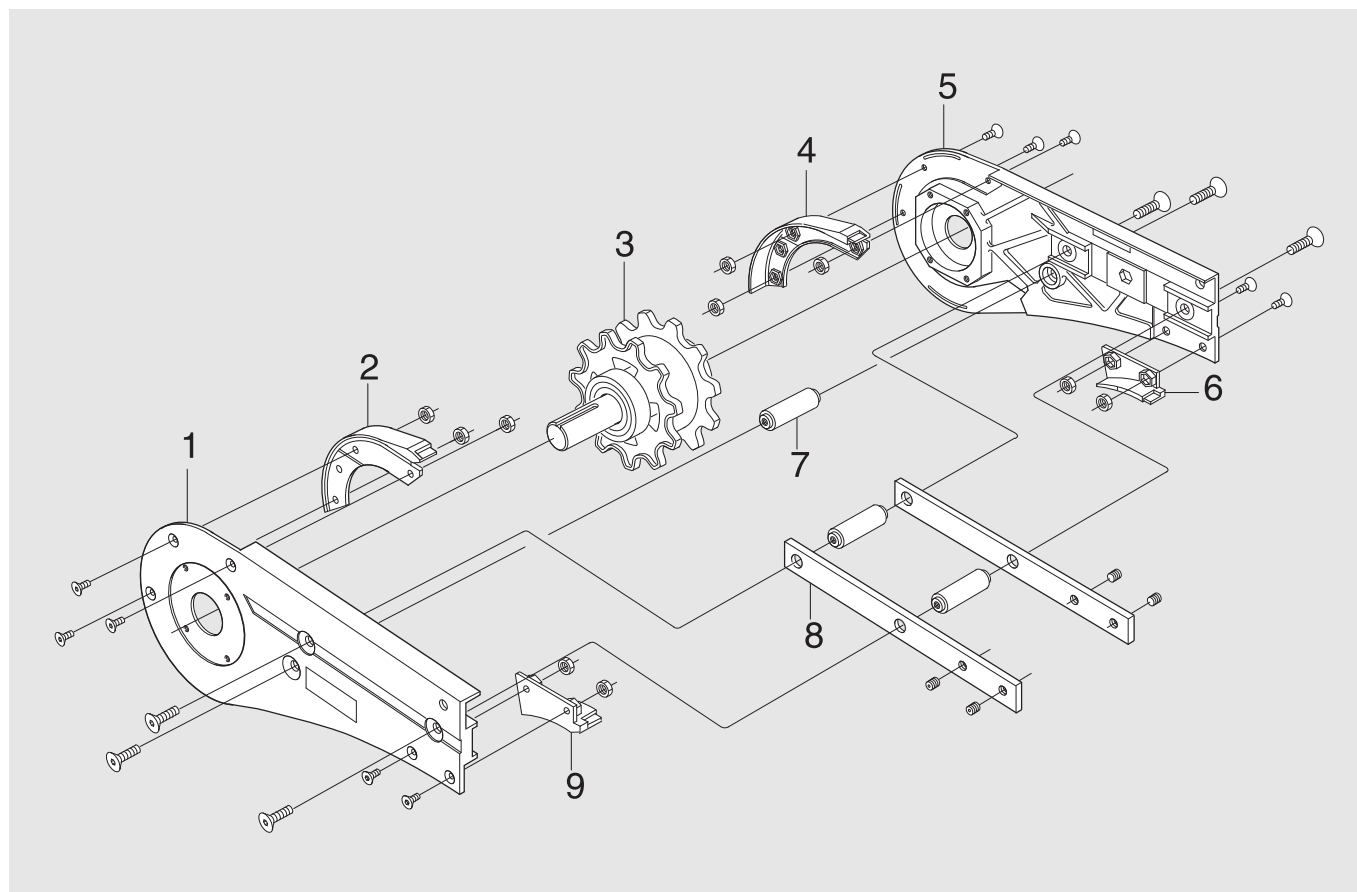
0-unit – XKEB 0 L/R/LA/RA



Item	Description	Part No	Qty	Comments	Recommended Spare parts
1	Basic unit (left-hand version)	XKEB 0 HLU	1	See next page for details	
	Basic unit (right-hand version)	XKEB 0 HRU	1	See next page for details	
2	Motor bracket	3925025	1		
3*	Slack protection	(3925590)	1	See kit below	
4	Adjusting block	3924287	1		
5	Transmission cover	3925068	1		
6	Slip clutch Ø25 mm	5053981	1	ISO	
	-Slip clutch, Spare parts kit	5056817	1	ISO, incl. cup spring, ball, chain wheel.	X
	Slip clutch Ø25 mm	5054000	1	ANSI	
	-Slip clutch, Spare parts kit	5056820	1	ANSI, incl. cup spring, ball, chain wheel.	X
7*	Slack protection	(3925589)	1	See kit below	
8	Motor bracket	3925024	1		
9	Thin parallel key	8x7-50	1	DIN 6885A h9	
10	Distance	3925325	1		
11*	Distance screw	(3904862)	5	See kit below	
12*	Distance screw	(3904855)	2	See kit below	
*) 3+7	Slack protection kit	5111650	1		
*) 11	Distance screw kit	5111600	1	Kit contains 10 pcs	
*) 12	Distance screw kit	5111599	1	Kit contains 10 pcs	

End drive unit

Basic unit – XKEB 0 HLU/HRU

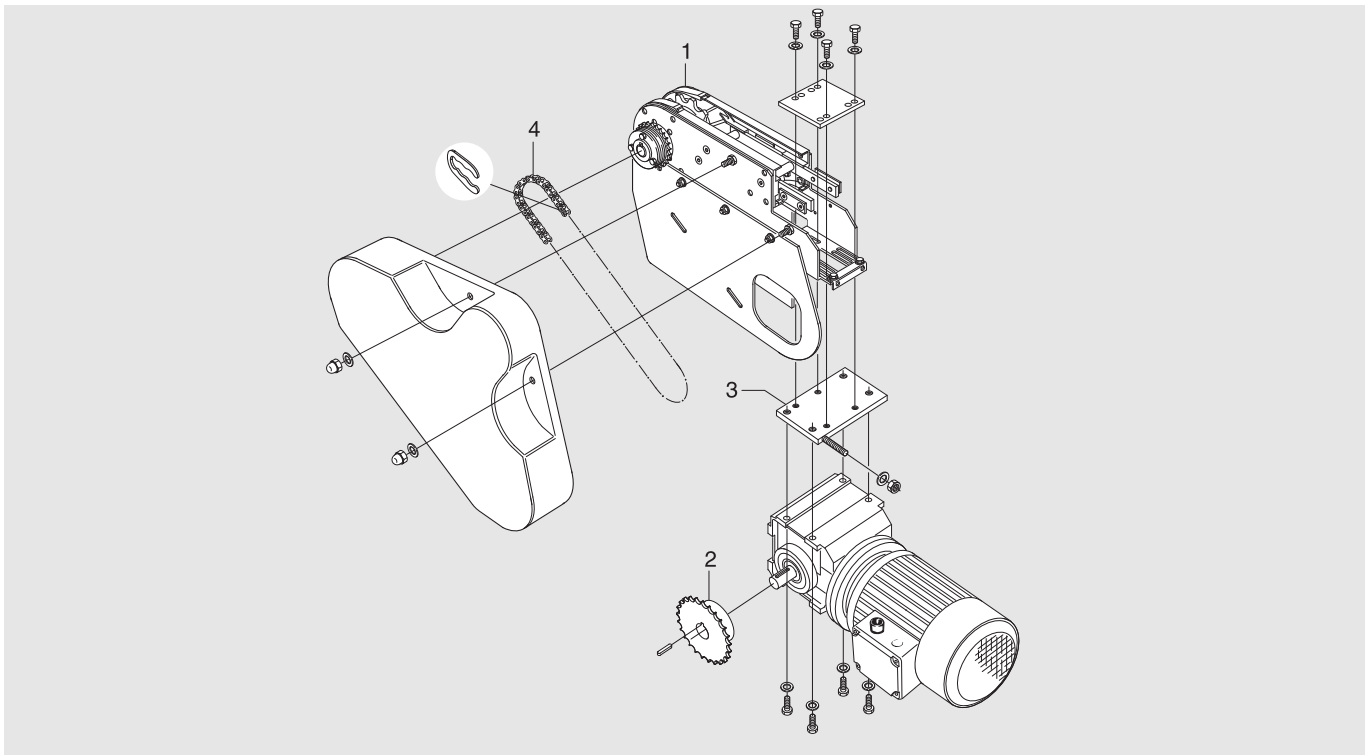


Item	Description	Part No	Qty	Comments	Recommended Spare parts
1*	Side plate L	(3920210)	1	See kit below	
2, 4	Spare parts kit Steering guide	5051421	1		X
3	Drive wheel kit	3925063	1	Incl. wheel, shaft, bearing and wedge	X
5*	Side plate R	(3920209)	1	See kit below	
6*	Guide R	(3924763)	1	See kit below	
7	Spacer	3924989	3		
8	Connecting strip	3921123	2		
9*	Guide L	(3924764)	1	See kit below	
*) 1+5	Side plate kit	5111651	1		
*) 6+9	Spare parts kit Guide	5111652	1		X

End drive unit, heavy-duty

Complete unit – XKEB_ HL/HR/HLA/HRA

For SEW S47 gearmotor



Item	Description	Part No	Qty	Comments	Recommended Spare parts
1	0-unit (left-hand version)	XKEB 0 HL/HLA	1	See next page for details	
	0-unit (right-hand version)	XKEB 0 HR/HRA	1	See next page for details	
2	Sprocket wheel 5/8" incl. grub screw		1	See table below	X
3	Adapter plate incl. bolts and washers, reinforc. plate	3925035	1		
	Adapter plate	3924455	1	Blind adapter plate	
4	Transmission chain 5/8" incl. connecting link	3925957	1	ISO/R- 1967- 08B- 1 (ISO)	X
	Transmission chain 5/8" incl. connecting link	5044980		ISO/R- 1967- 08A- 1 (ANSI)	X

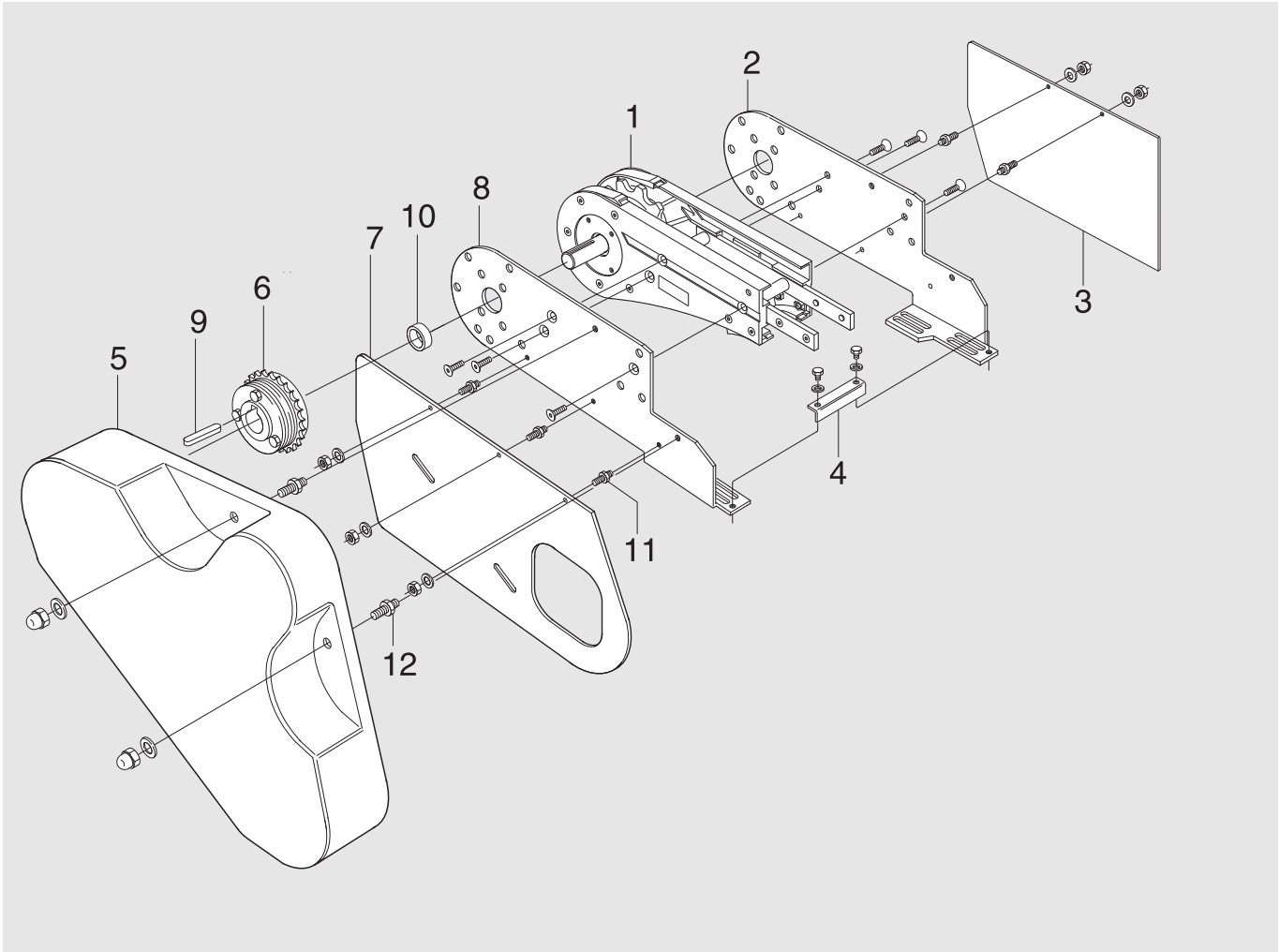
Important

Items 2-4 must be ordered separately when ordering a 0-unit (item 1). The sprocket wheel (item 2) should be specified in accordance with the following table:

Sprocket wheel 5/8"	Part No (SEW)
z ₁ =15	3925259
z ₁ =17	3925260
z ₁ =19	3925261
z ₁ =21	3925262
z ₁ =23	3925263
z ₁ =25	3925264
z ₁ =15 ANSI	5044972
z ₁ =17 ANSI	5044973
z ₁ =19 ANSI	5044974
z ₁ =21 ANSI	5044975
z ₁ =23 ANSI	5044976
z ₁ =25 ANSI	5044977
z ₂ =25 ANSI	5045367

End drive unit, heavy-duty

0-unit – XKEB 0 HL/HR/HLA/HRA

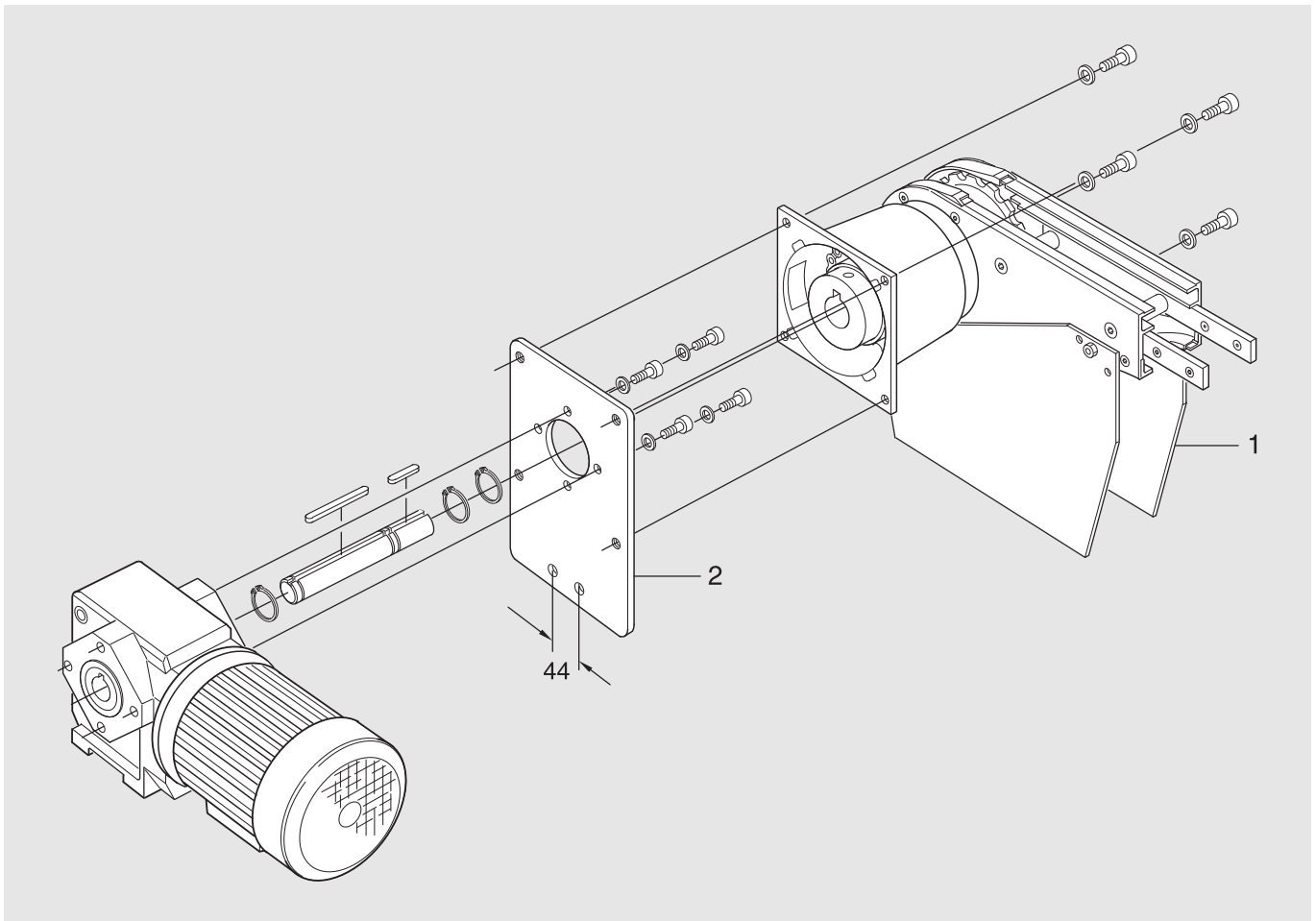


Item	Description	Part No	Qty	Comments	Recommended Spare parts
1	Basic unit (left-hand version)	XKEB 0 HLU	1	See Page 4 for details	
	Basic unit (right-hand version)	XKEB 0 HRU	1	See Page 4 for details	
2	Motor bracket	3925025	1		
3*	Slack protection	(3925590)	1	See kit below	
4	Adjusting block	3924287	1		
5	Transmission cover	3925068	1		
6	Slip clutch Ø25 mm	5054001	1	ISO, 5/8"	X
	Slip clutch Ø25 mm	5054002	1	ANSI, 5/8"	X
7*	Slack protection	(3925589)	1	See kit below	
8	Motor bracket	3925024	1		
9	Thin parallel key	8×7–50	1	DIN 6885 A h9	
10	Distance	3925325	1		
11*	Distance screw	(3904862)	5	See kit below	
12*	Distance screw	(3904855)	2	See kit below	
*) 3+7	Slack protection kit	5111650	1		
*) 11	Distance screw kit	5111600	1	Kit contains 10 pcs	
*) 12	Distance screw kit	5111599	1	Kit contains 10 pcs	

End drive unit, direct drive

Complete unit – XKEB_LP/RP/LAP/RAP

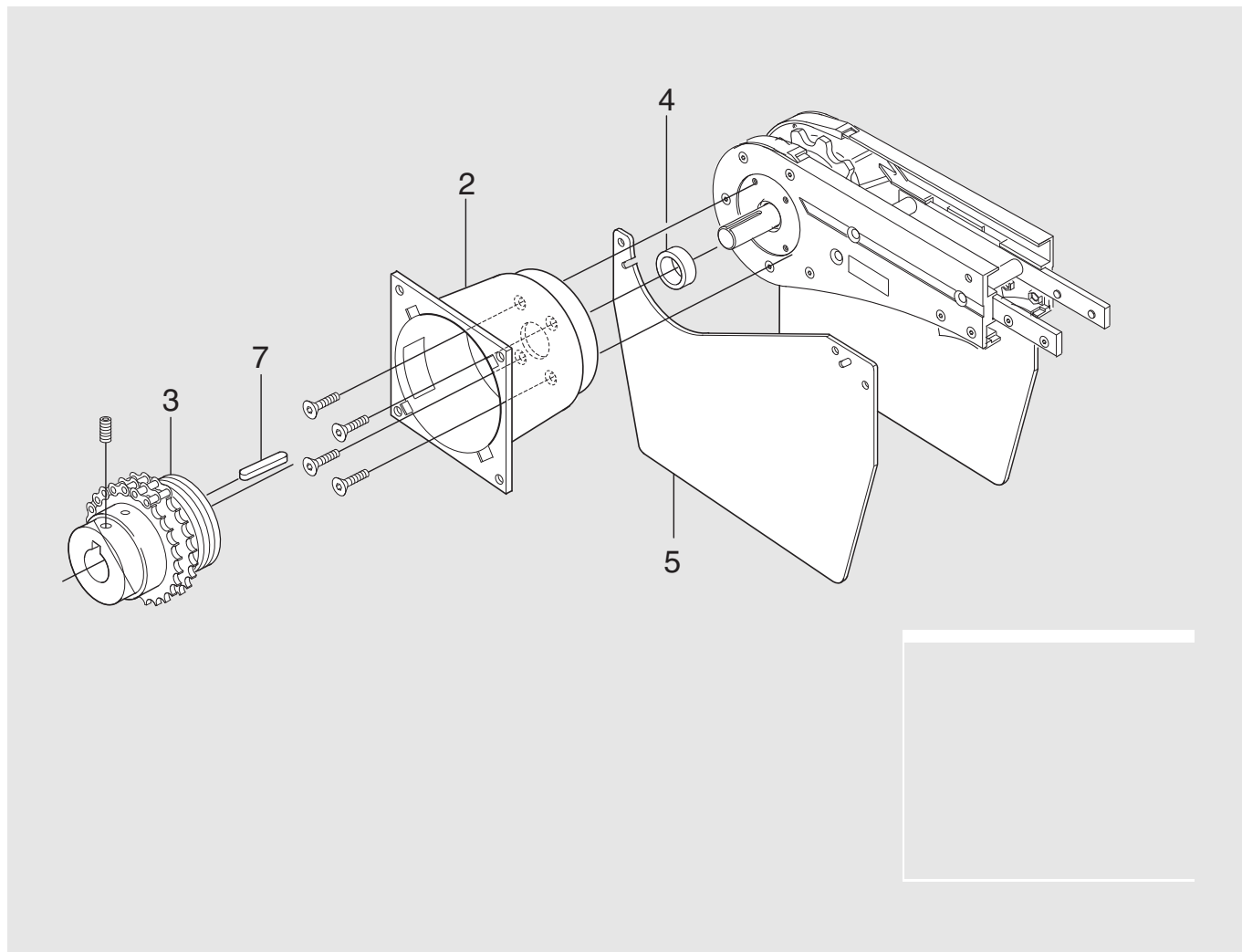
For SEW SA37 gearmotor



Item	Description	Part No	Qty	Comments	Recommended Spare parts
1	0-unit (left-hand version)	XKEB 0 LP	1	See next page for details	
	0-unit (right-hand version)	XKEB 0 RP	1	See next page for details	
	Motor , see Drive unit guide 5014				
2	Adapter plate including bolts, washers and shaft	3920088	1	SEW SA37 gearmotor	

End drive unit, direct drive

0-unit – XKEB 0 LP/RP

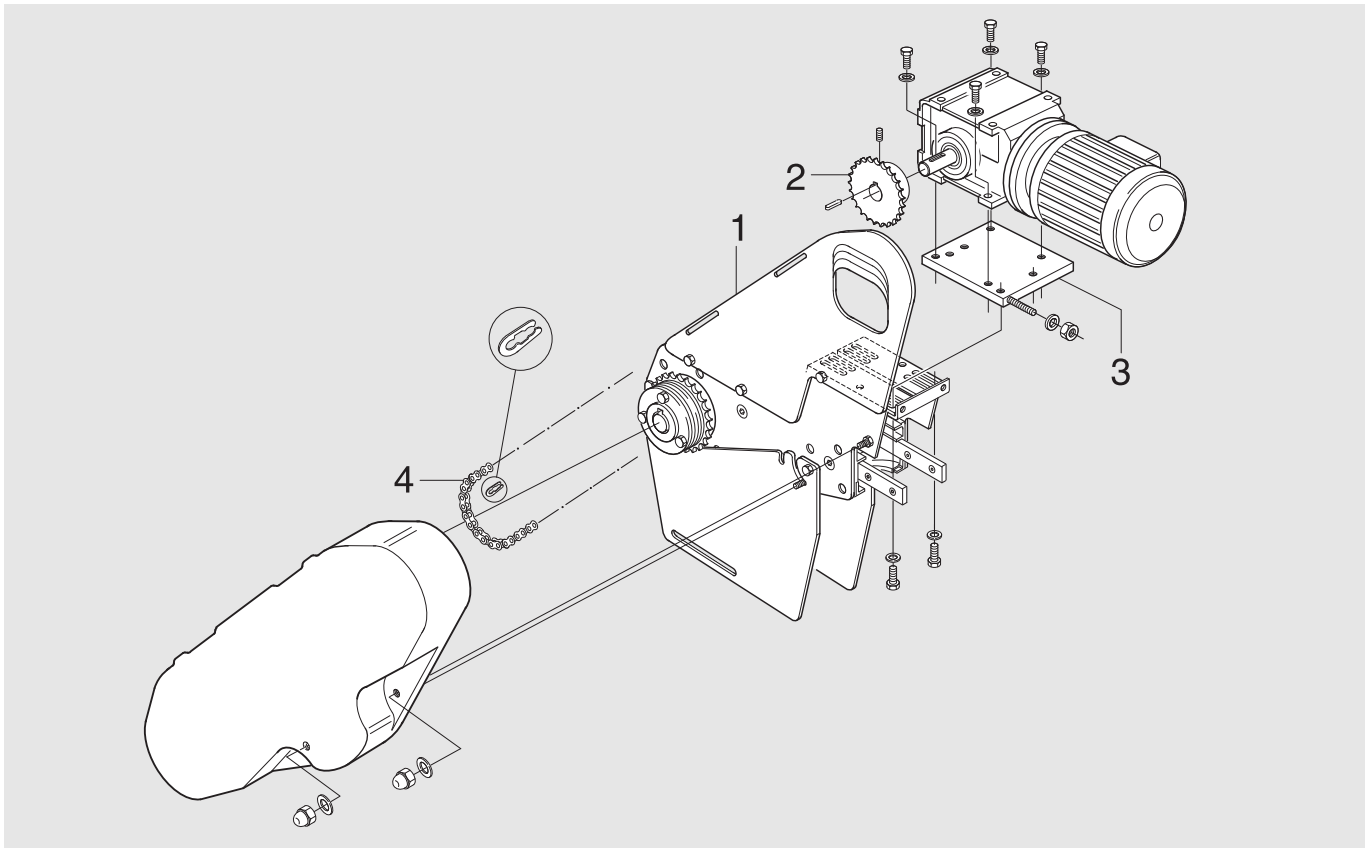


Item	Description	Part No	Qty	Comments	Recommended Spare parts
1	Basic unit (left-hand version)	XKEB 0 HLU	1	See Page 4 for details	
	Basic unit (right-hand version)	XKEB 0 HRU	1	See Page 4 for details	
2	Flange	3920084	1		
3	Slip clutch Ø20–Ø25 mm	5054003	1		X
4	Distance ring	3925921	1		
5*	Slack protection	(5048340)	2	See kit below	
6	Screw	(3925718)	4	See kit below	
7	Thin parallel key	8×7–40	1	DIN 6885 A h9	
*) 5	Slack protection kit	5111653	1	LH+RH	
*) 6	Distance screw kit	5111598	1	Kit contains 10 pcs	

End drive unit, overhead motor

Complete unit – XKEH _L/R/LA/RA

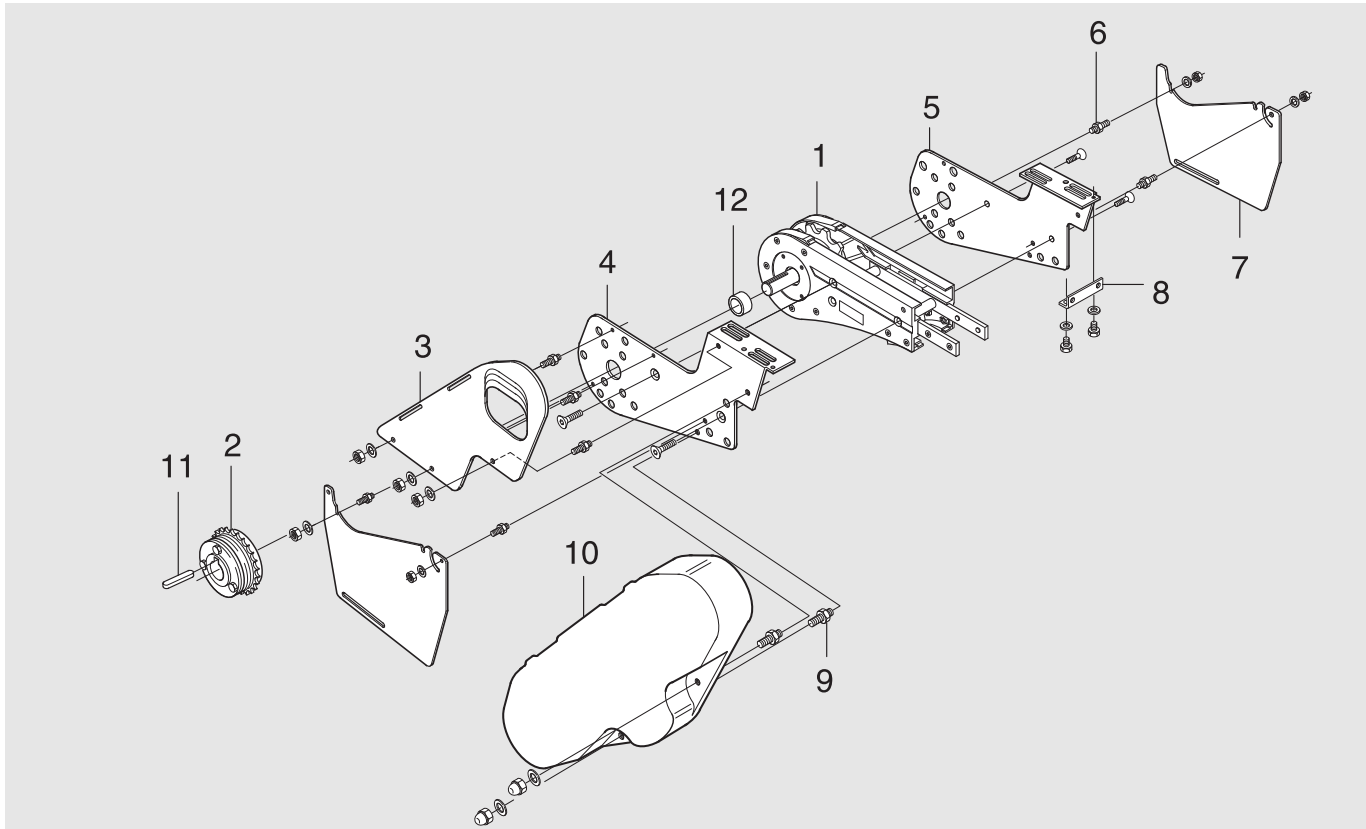
For SEW S37 gearmotor



Item	Description	Part No	Qty	Comments	Recommended Spare parts
1	0-unit (left-hand version)	XKEH 0 L/LA	1	See next page for details	
	0-unit (right-hand version)	XKEH 0 R/RA	1	See next page for details	
2	Sprocket wheel 1/2" including grub screw	See page 2	1		
3	Adapter plate including bolts and washers	3924197	1	For SEW S37 gearmotor	
	Adapter plate	3924455	1	Blind adapter plate	
4	Transmission chain 1/2" including connecting link	See page 2	1	ISO/R- 1967- 08B- 1 (ISO)	X
	Transmission chain 1/2" including connecting link	See page 2	1	ISO/R- 1967- 08A- 1 (ANSI)	X

End drive unit, overhead motor

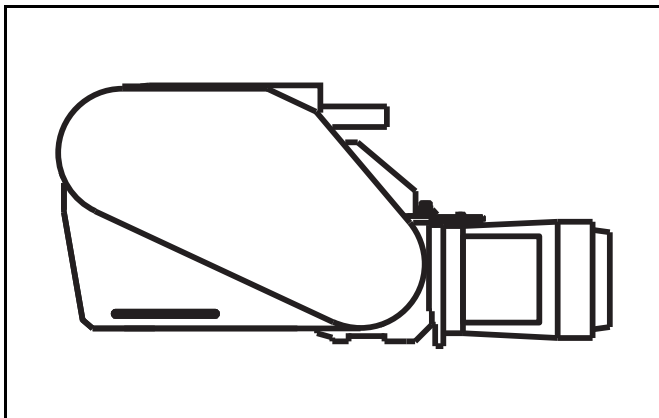
0-unit – XKEH 0 L/R/LA/RA



Item	Description	Part No	Qty	Comments	Recommended Spare parts
1	Basic unit (left-hand version)	XKEB 0 HLU	1	See Page 4 for details	
	Basic unit (right-hand version)	XKEB 0 HRU	1	See Page 4 for details	
2	Slip clutch Ø25 mm	5053981	1	ISO	
	-Slip clutch, Spare parts kit	5056817	1	ISO, incl. cup spring, ball, chain wheel.	X
	Slip clutch Ø25 mm	5054000	1	ANSI	
	-Slip clutch, Spare parts kit	5056820	1	ANSI, incl. cup spring, ball, chain wheel.	X
3	Safety guard	3926402	1		
4	Motor bracket L	3926400	1		
5	Motor bracket R	3926401	1		
6*	Screw	(3904862)	6	See kit below	
7*	Slack protection	(3926375)	2	See kit below	
8	Adjusting block	3924287	1		
9*	Screw	(3904855)	2	See kit below	
10	Transmission cover	3925068	1		
11	Thin parallel key	8×7–50	1	DIN 6885A h9	
12	Distance ring	3925325	1		
*) 7	Slack protections kit	5111633	1		
*) 6	Distance screw kit	5111600	1	Kit contains 10pcs	
*) 9	Distance screw kit	5111599	1	Kit contains 10pcs	

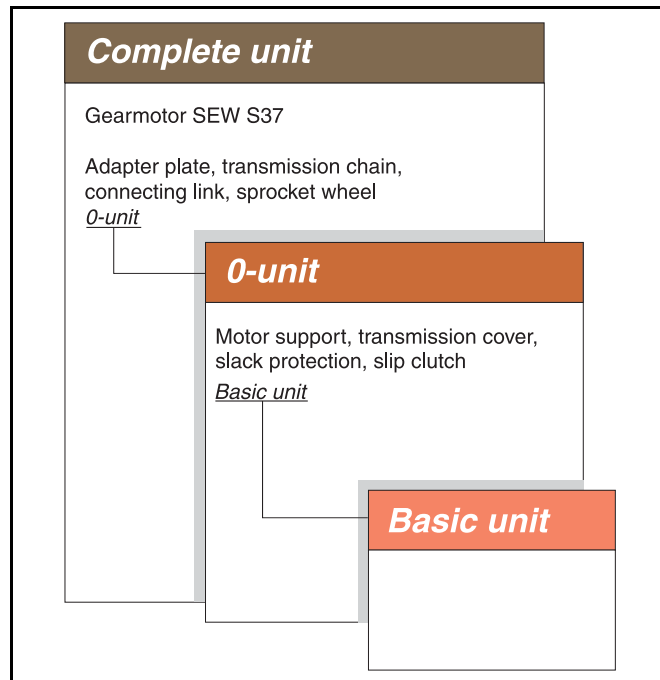


Double drive unit - XK



Revision list

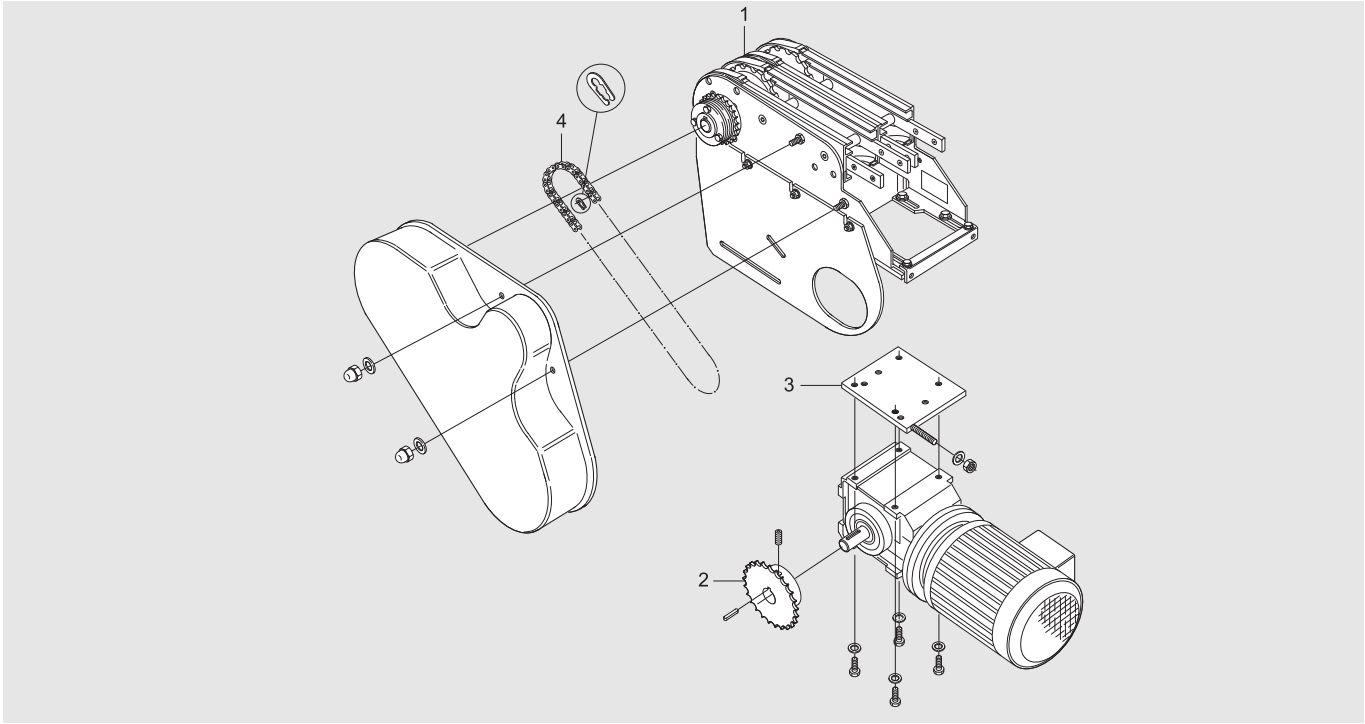
Document designation	Date	Type of revision	Entered by
XK002-E1	98-10-14	New version	Enator Inforum
XK002-E2	99-09-13	Double drive unit (c/c106mm)	TietoEnator
XK002-E3	00-05-15	P. 4 item 2.4: PartNo change	AerotechTelub
XK002-E4	08-10-22	Spare part kits added	JE
XK002-E5	09-03-19		JE
XK002-E6	10-06-22	Added new col.	JE



Double drive unit (c/c 106 mm)

Complete unit – XKEB _LD/RD106/LAD106/RAD106*

For SEW S37 gearmotor



Item	Description	Part No	Qty	Comments	Recommended Spare parts
1	0-unit (left-hand version)	XKEB 0 LD/LAD106	1	See next page for details	
	0-unit (right-hand version)	XKEB 0 RD/RAD106	1	See next page for details	
2	Sprocket wheel 1/2" including grub screw		1	See table below	X
3	Adapter plate including bolts and washers	3926310	1	For SEW S37 gearmotor	
	Adapter plate	3924455	1	Blind plate	
4	Transmission chain 1/2" including connecting link	3921638	1	ISO/R- 1967- 08B- 1 (ISO)	X
	Transmission chain 1/2" including connecting link	5044948	1	ISO/R- 1967- 08A- 1 (ANSI)	X

* c/c 106 mm

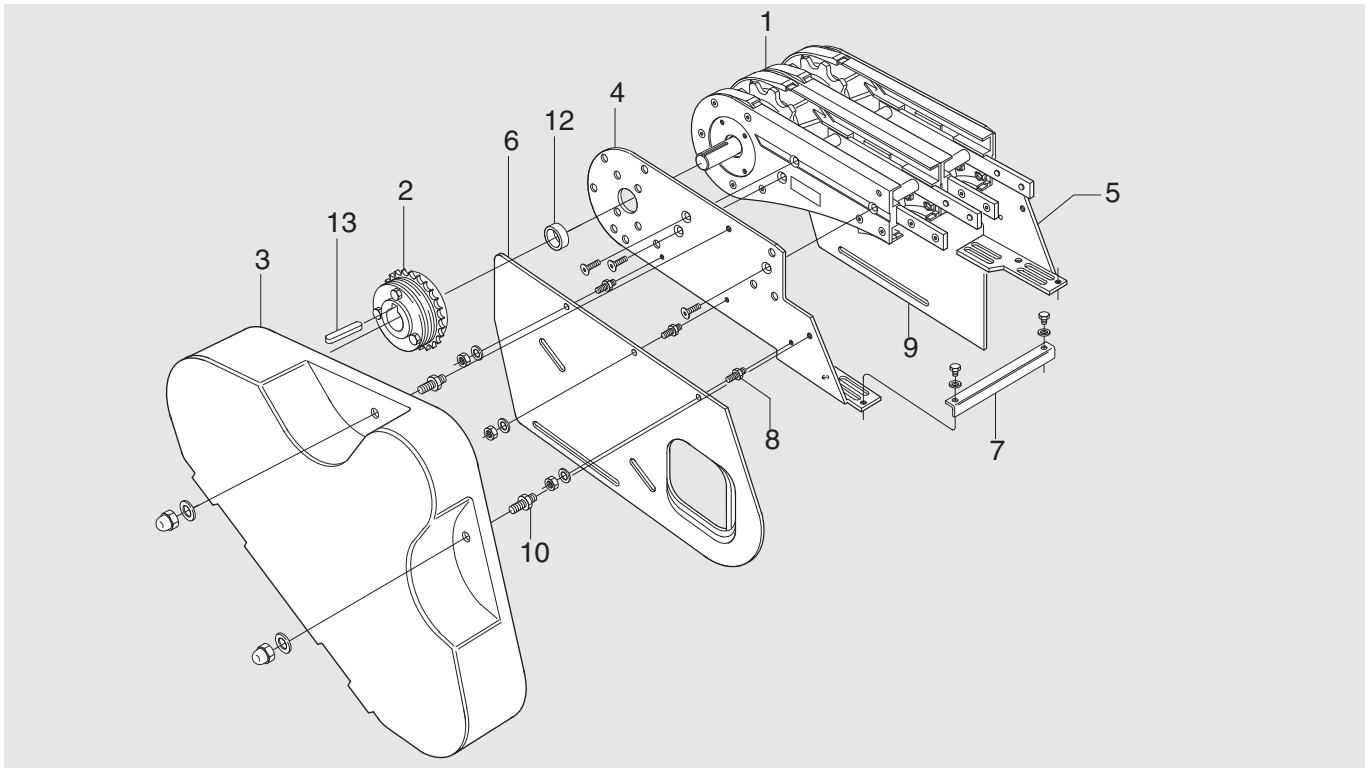
Important

Items 2-4 must be ordered separately when ordering a 0-unit (item 1). The sprocket wheel (item 2) should be specified in accordance with the following table:

Sprocket wheel 1/2"	Part No (SEW)
z ₁ =19	3924438
z ₁ =21	3924439
z ₁ =23	3924440
z ₁ =25	3921258
z ₁ =15 ANSI	5044935
z ₁ =17 ANSI	5044936
z ₁ =19 ANSI	5044937
z ₁ =21 ANSI	5044938
z ₁ =23 ANSI	5044939
z ₁ =25 ANSI	5044940

Double drive unit (c/c 106 mm)

0-unit – XKEB 0 LD/RD/LAD/RAD106*

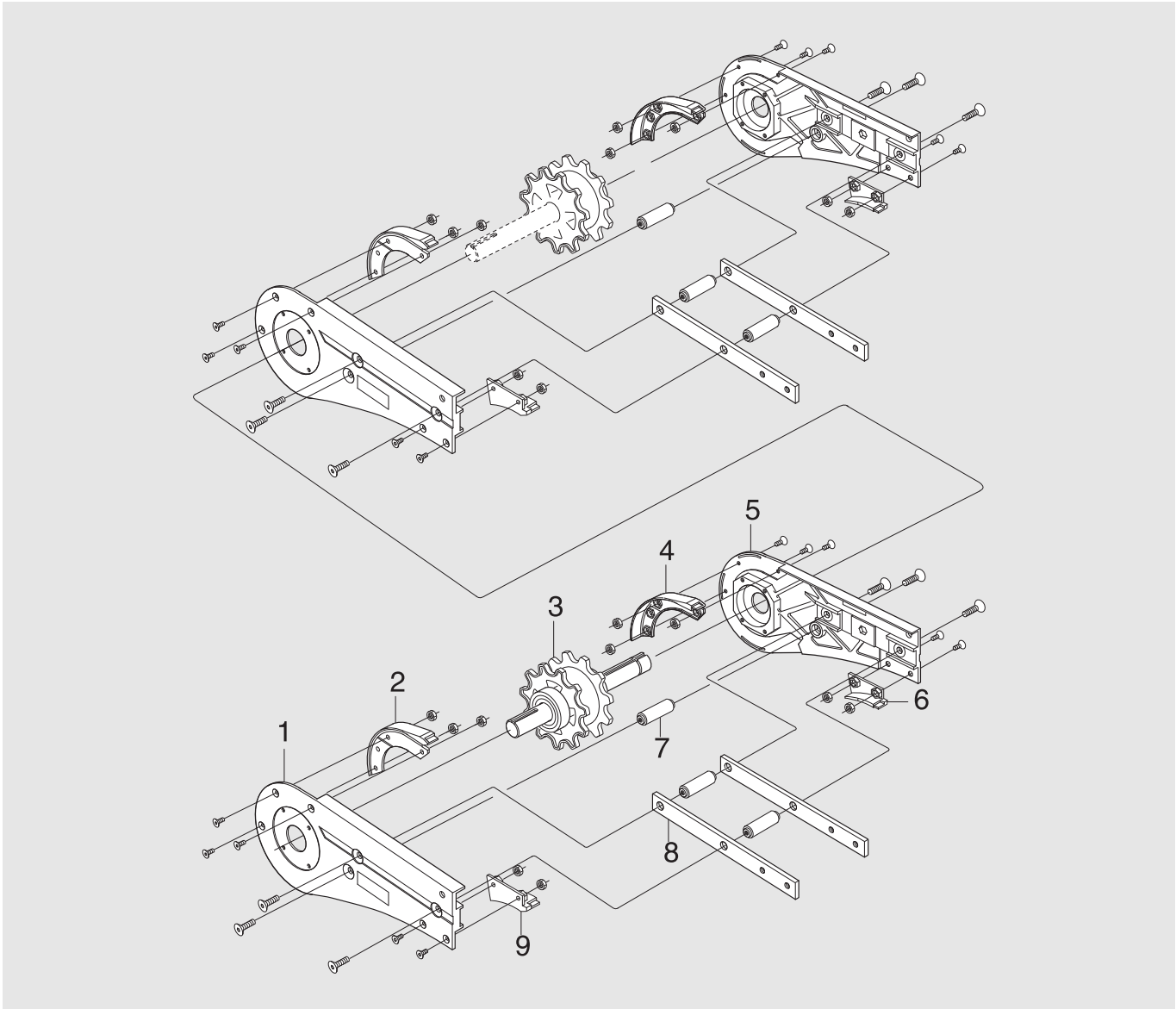


Item	Description	Part No	Qty	Comments	Recommended Spare parts
1	Basic unit	XKEB 0 LDU106	1	See next page for details	
	Basic unit	XKEB 0 RDU106	1	See next page for details	
2	Slip clutch Ø25 mm	5053981	1	ISO	
	-Slip clutch, Spare parts kit	5056817	1	ISO, incl. cup spring, ball, chain wheel.	X
	Slip clutch Ø25 mm	5054000	1	ANSI	
	-Slip clutch, Spare parts kit	5056820	1	ANSI, incl. cup spring, ball, chain wheel.	X
3	Transmission cover	3925068	1		
4	Motor bracket R	3925025	1		
5	Motor bracket L	3925024	1		
6*	Slack protection	(3925589)	1	See kit below	
7	Adjusting block	3926279	1		
8*	Distance screw M6	(3904862)	5	See kit below	
9*	Slack protection	(3925590)	1	See kit below	
10*	Distance screw M8	(3904855)	2	See kit below	
11	Adapter plate	3926310	1	c/c 106	
12	Distance	3925325	1		
13	Thin parallel key	8x7-63	1	DIN 6885A h9	
*) 6+9	Slack protection kit	5111650	1	LH+RH	
*) 8	Distance screw kit	5111600	1	Kit contains 10 pcs	
*) 10	Distance screw kit	5111599	1	Kit contains 10 pcs	

* c/c 106 mm

Double drive unit

Basic unit – XKEB 0 LDU/RDU106*

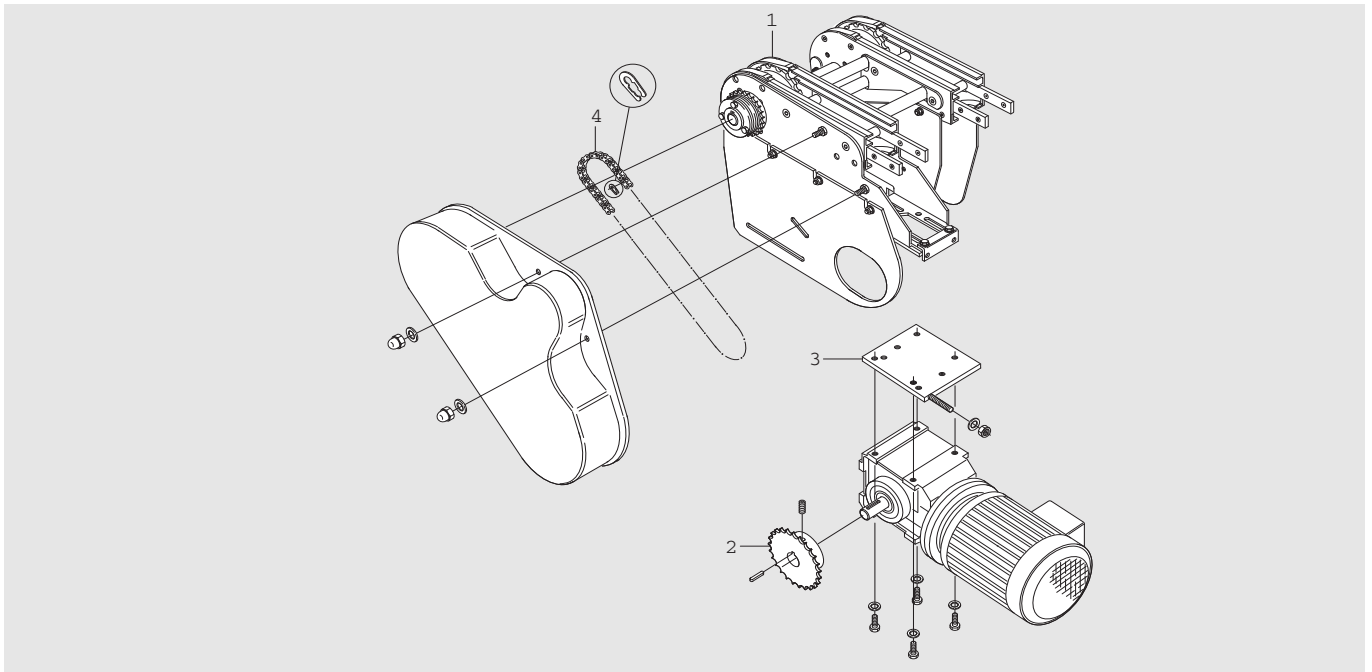


Item	Description	Part No	Qty	Comments	Recommended Spare parts
1*	Side plate L	(3920210)	2	See kit below	
2,4	Spare parts kit Steering guide	5051421	2	Marked A, B and C, D	X
3	Drive wheel kit	3926299	1	c/c 106/150–350	X
5*	Side plate R	(3920209)	2	See kit below	
6*	Guide L	(3924764)	2	See kit below	
7	Spacer	3924989	6		
8	Connecting strip	3921123	4		
9*	Guide R	(3924763)	2	See kit below	
*) 1+5	Side plate kit	5111651	1	LH+RH	
*) 6+9	Spare parts kit Guide	5111652	2	LH+RH	X

Double drive unit (c/c 150-350 mm)

Complete unit – XKEB_LD/RD/LAD/RAD-*

For SEW S37 gearmotor



Item	Description	Part No	Qty	Comments	Recommended Spare parts
1	0-unit (left-hand version)	XKEB 0 LD/LAD-	1	See next page for details	
	0-unit (right-hand version)	XKEB 0 RD/RAD-	1	See next page for details	
2	Sprocket wheel 1/2" including grub screw		1	See table below	X
3	Adapter plate including bolts and washers	3924197	1	For SEW S37 gearmotor	
	Adapter plate	3924455	1	Blind adapter plate	
4	Transmission chain 1/2" including connecting link	3921638	1	ISO/R- 1967- 08B- 1 (ISO)	X
	Transmission chain 1/2" including connecting link	5044948	1	ISO/R- 1967- 08A- 1 (ANSI)	X

* The dash (-) indicates a customer specified c/c distance in the range 150 mm to 350 mm.

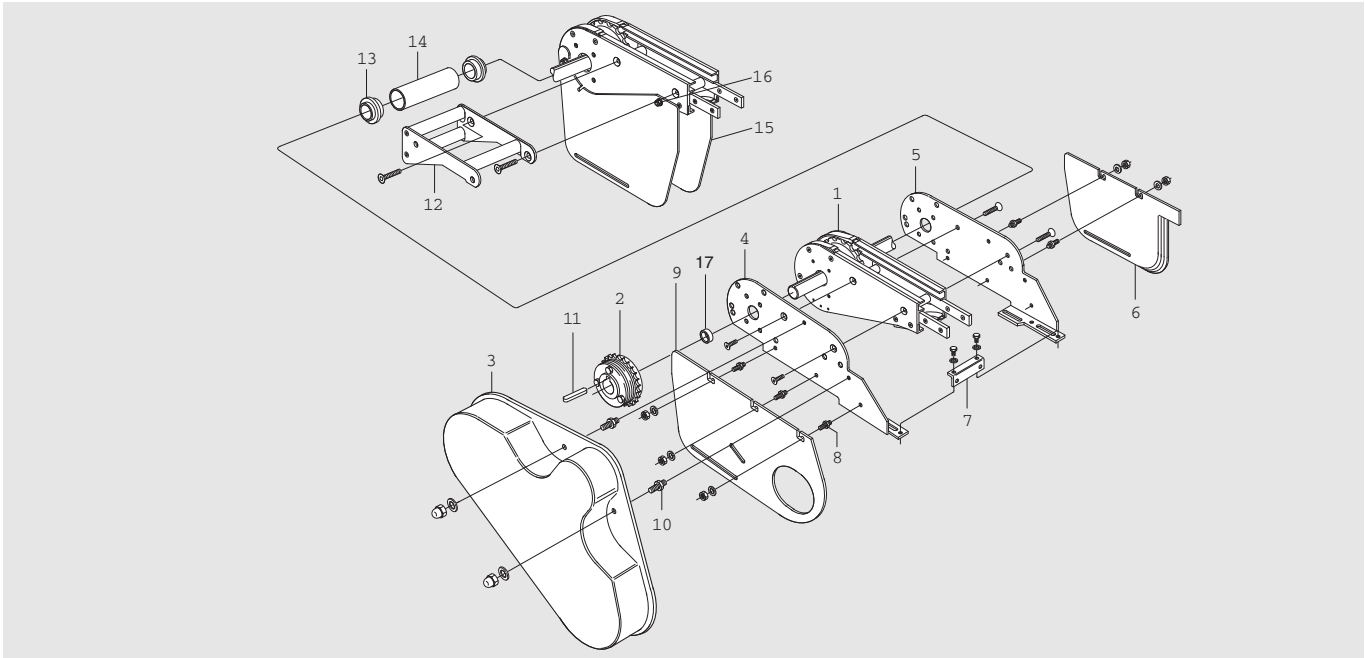
Important

Items 2-4 must be ordered separately when ordering a 0-unit (item 1). The sprocket wheel (item 2) should be specified in accordance with the following table:

Sprocket wheel 1/2"	Part No (SEW)
Z ₁ =19	3924438
Z ₁ =21	3924439
Z ₁ =23	3924440
Z ₁ =25	3921258
Z ₁ =15 ANSI	5044935
Z ₁ =17 ANSI	5044936
Z ₁ =19 ANSI	5044937
Z ₁ =21 ANSI	5044938
Z ₁ =23 ANSI	5044939
Z ₁ =25 ANSI	5044940

Double drive unit (c/c 150-350 mm)

0-unit – XKEB 0 LD/RD/LAD/RAD-*

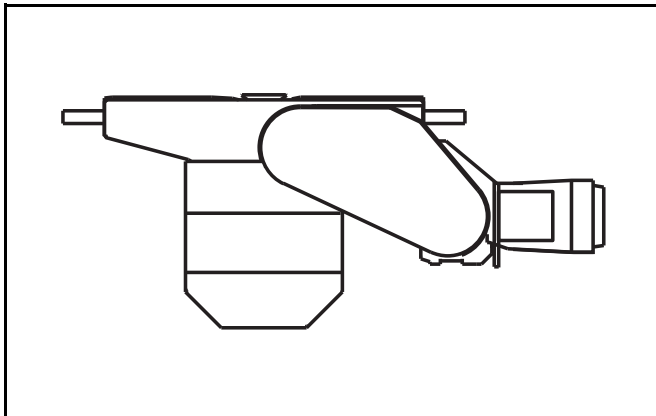


Item	Description	Part No	Qty	Comments	Recommended Spare parts
1	Basic unit	XKEB 0 HLDU-	1	See Page 14 for details	
	Basic unit	XKEB 0 HRDU-	1	See Page 14 for details	
2	Slip clutch Ø25 mm	5053981	1	ISO	
	-Slip clutch, Spare parts kit	5056817	1	ISO, incl. cup spring, ball, chain wheel.	X
	Slip clutch Ø25 mm	5054000	1	ANSI	
	-Slip clutch, Spare parts kit	5056820	1	ANSI, incl. cup spring, ball, chain wheel.	X
3	Transmission cover	3925068	1		
4	Motor bracket	3926361	2		
5	Motor bracket	3926360	2		
6*	Slack protection	(3925589)	1	See kit below	
7	Adjusting block	3925469	1		
8*	Distance screw M6	(3904862)	9	See kit below	
9*	Slack protection	(3925590)	1	See kit below	
10*	Distance screw M8	(3904855)	2	See kit below	
11	Thin parallel key	8x7-63	1	DIN 6885A h9	
12	Fastener yoke	5046985	1		
13	Bushing	5044695	2		
14	Sleeve	5046977	1		
15	Slack protection	5047050	2		
16	Distance screw	3925718	2		
17	Distance	3925325	1		
*) 6+9	Slack protection kit	5111650	1	LH+RH	
*) 8	Distance screw kit	5111600	1	Kit contains 10 pcs	
*) 10	Distance screw kit	5111599	1	Kit contains 10 pcs	

* The dash (-) indicates a customer specified c/c distance in the range 150 mm to 350 mm.

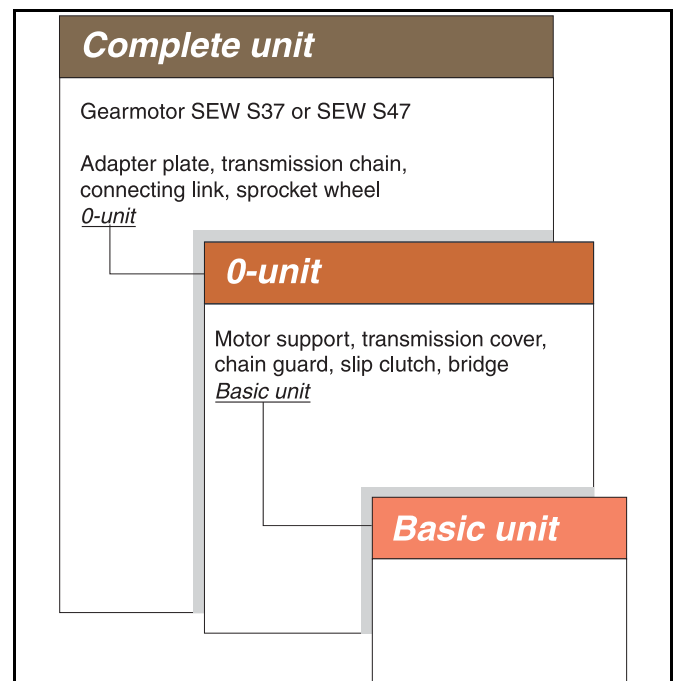


Catenary drive unit - XK



Revision list

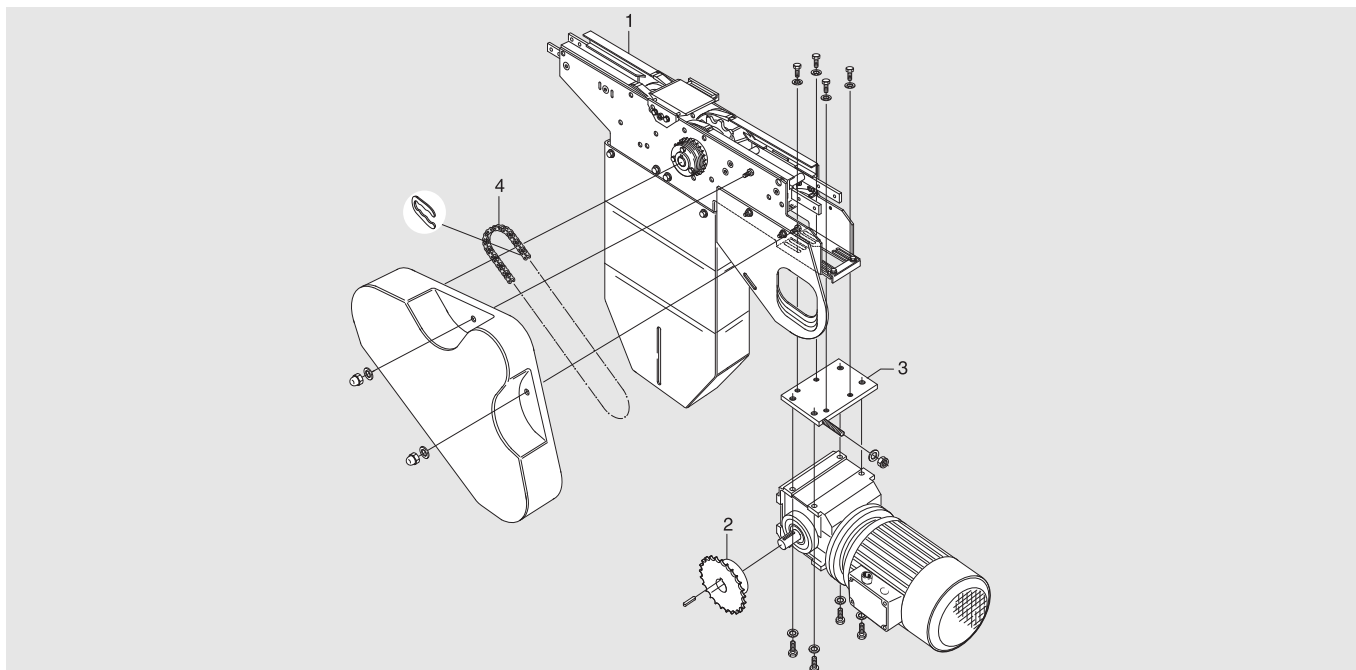
Document designation	Date	Type of revision	Entered by
XK003-E1	98-10-14	New version	Enator Inforum
XK003-E2	00-05-15	P4-5 Part No changed	Aerotech Telub
XK003-E3	08-05-06	P. 3+7 item 16 Part No changed	BS
XK003-E4	08-10-23	Spare part kits added	JE
XK003-E5	09-03-19		JE
XK003-E6	10-02-16	Slip clutch SPkit, deleted	JE
XK003-E7	10-06-23	Added new col.	JE



Catenary drive unit

Complete unit – XKEC_L/R/LA/RA

For SEW S37 gearmotor



Item	Description	Part No	Qty	Comments	Recommended Spare parts
1	0-unit (left-hand version)	XKEC 0 L/LA	1	See next page for details	
	0-unit (right-hand version)	XKEC 0 R/RA	1	See next page for details	
2	Sprocket wheel 1/2" including grub screw		1	See table below	X
3	Adapter plate including bolts and washers	3924197	1	For SEW S37 gearmotor	
	Adapter plate	3924455	1	Blind adapter plate	
4	Transmission chain 1/2" including connecting link	3921638	1	ISO/R- 1967- 08B- 1 (ISO)	X
	Transmission chain 1/2" including connecting link	5044948	1	ISO/R- 1967- 08A- 1 (ANSI)	X

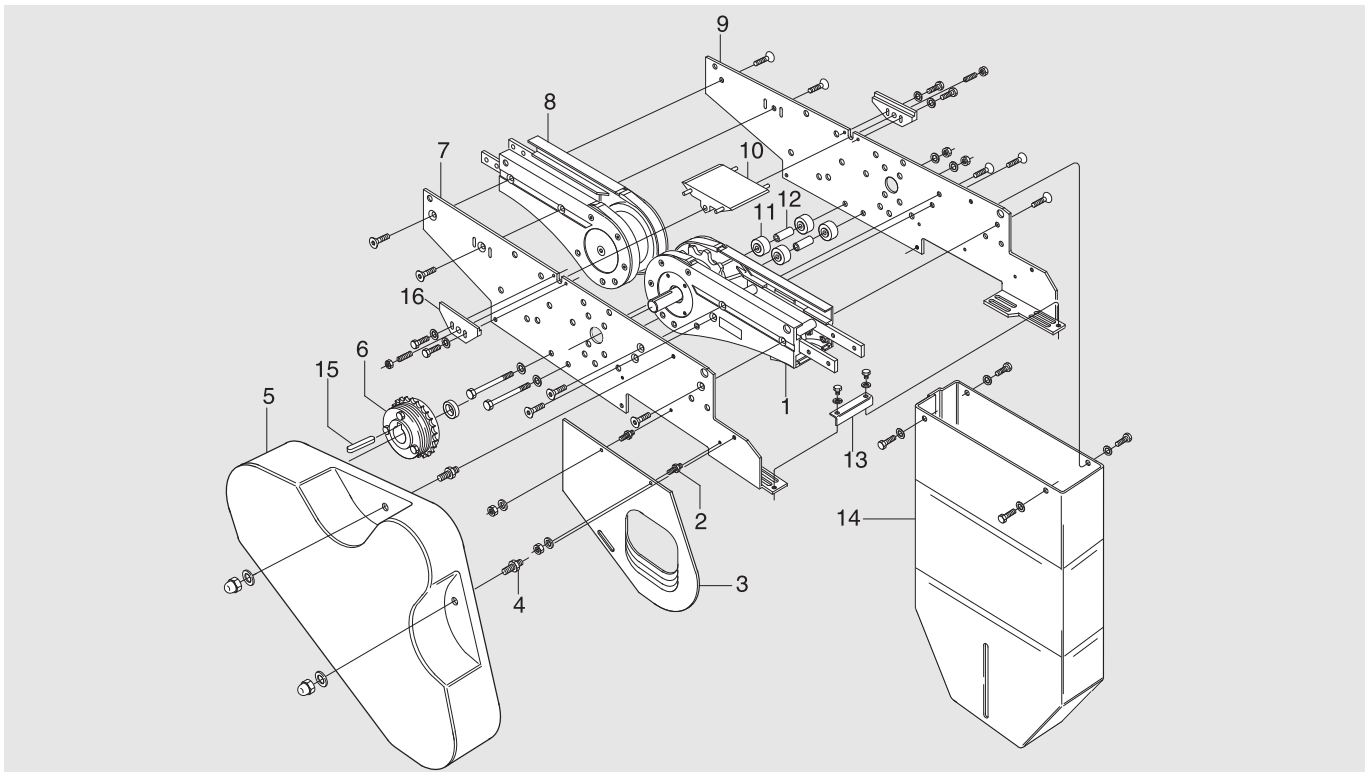
Important

Items 2-4 must be ordered separately when ordering a 0-unit (item 1). The sprocket wheel (item 2) should be specified in accordance with the following table:

Sprocket wheel 1/2"	Part No (SEW)
z ₁ =19	3924438
z ₁ =21	3924439
z ₁ =23	3924440
z ₁ =25	3921258
z ₁ =15 ANSI	5044935
z ₁ =17 ANSI	5044936
z ₁ =19 ANSI	5044937
z ₁ =21 ANSI	5044938
z ₁ =23 ANSI	5044939
z ₁ =25 ANSI	5044940

Catenary drive unit

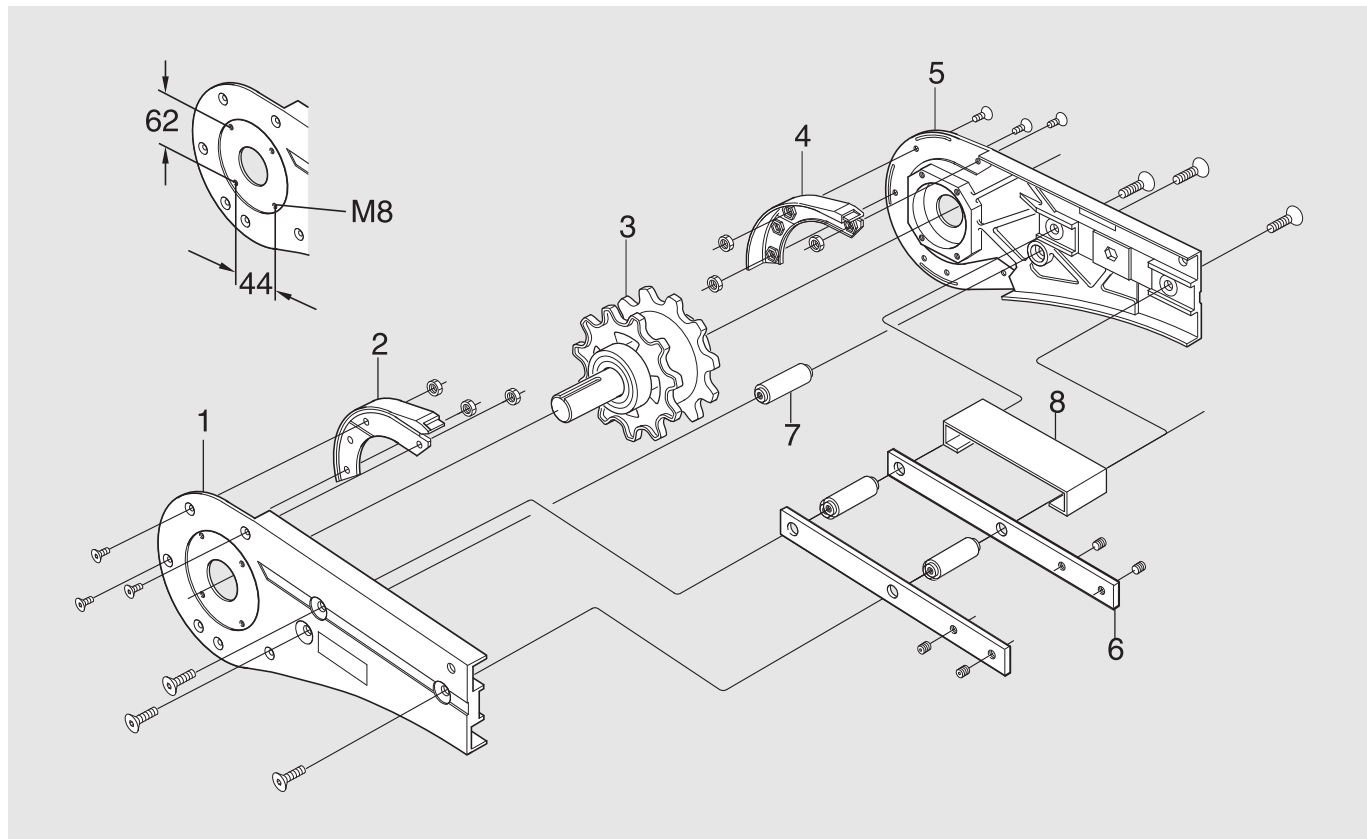
0-unit – XKEC 0 L/R/LA/RA



Item	Description	Part No	Qty	Comments	Recommended Spare parts
1	Basic unit (left-hand version)	3925333	1	See next page for details	
	Basic unit (right-hand version)	3925334	1	See next page for details	
2*	Distance screw	(3904862)	2	See kit below	
3	Chain guard	3925069	1		
4*	Distance screw	(3904855)	2	See kit below	
5	Transmission cover	3925068	1		
6	Slip clutch Ø25 mm	5053981	1	ISO	
	-Slip clutch, Spare parts kit	5056817	1	ISO, incl. cup spring, ball, chain wheel.	X
6	Slip clutch Ø25 mm	5054000	1	ANSI	
	-Slip clutch, Spare parts kit	5056820	1	ANSI, incl. cup spring, ball, chain wheel.	X
7	Motor bracket L	3925027	1		
8	Idler unit	3925332	1	See page 5 for details	
9	Motor bracket R	3925028	1		
10	Bridge	3905610	1		
11	Support ruller	3920087	4		
12	Distance pipe	3920010	2		
13	Adjusting block	3924287	1		
14	Cover	3925336	1		
15	Thin parallel key	8x7-63	1	DIN 6885A h9	
16	Adjustment plate	5043154	2		
*) 2	Distance screw kit	5111600	1	Kit contains 10 pcs	
*) 4	Distance screw kit	5111599	1	Kit contains 10 pcs	

Catenary drive unit

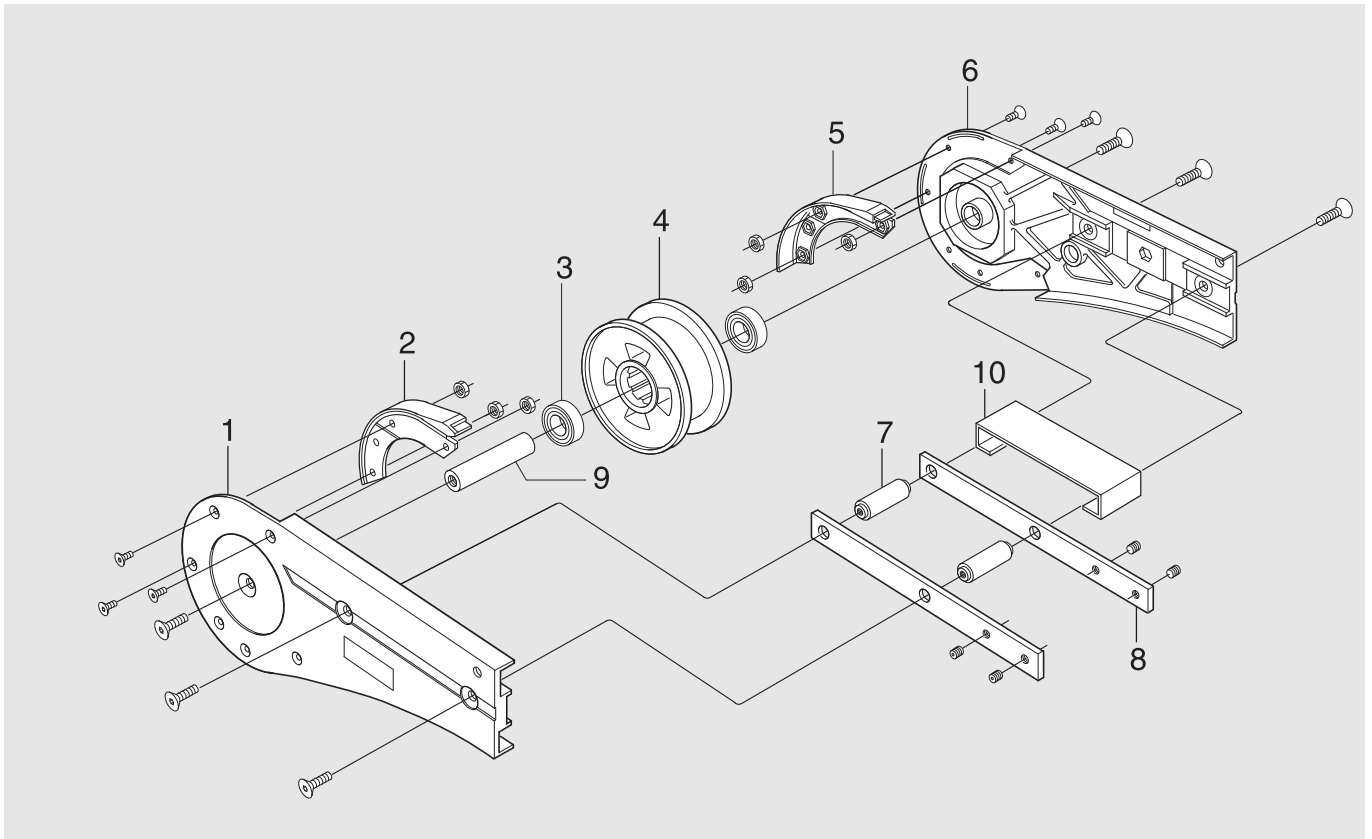
Basic unit – 3925333



Item	Description	Part No	Qty	Comments	Recommended Spare parts
1*	Side plate L	(3925067)	1	See kit below	
2	Spare parts kit Steering guide	5051421	1	Marked C and D	X
3	Drive wheel kit	3925063	1	Including wheel, shaft, wedge and bearing	X
4	Spare parts kit Steering guide	See item 2		Marked A and B	X
5*	Side plate R	(3925066)	1	See kit below	
6	Connecting strip	3921123	2		
7	Spacer	3924989	3		
8	Cover plate	3925029	1		
*) 1+5	Side plate kit	5111649	1	LH+RH	

Catenary drive unit

Idler unit – 3925332

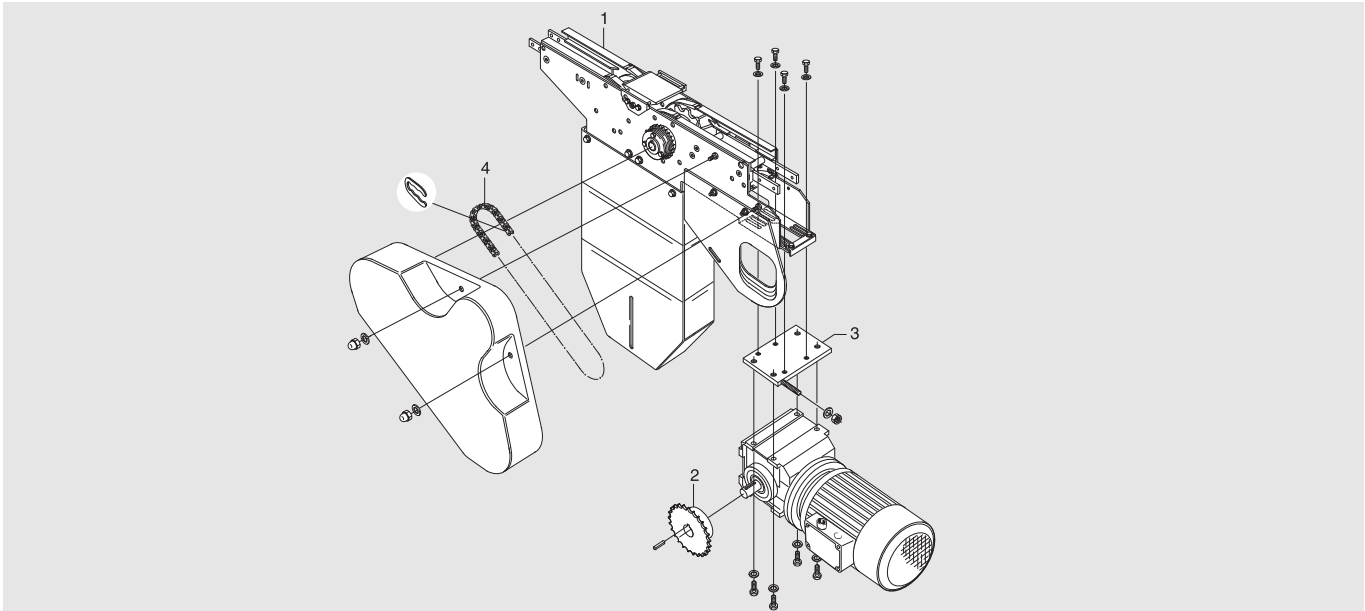


Item	Description	Part No	Qty	Comments	Recommended Spare parts
1	Side plate R	3920208	1		
2	Spare parts kit Steering guide	5051421	1	Marked C and D	X
3	Bearing	6202-2Z	2		
4	Wheel	5111648	1	(3924757)	X
5	Spare parts kit Steering guide	See item 2		Marked A and B	X
6	Side plate L	3920207	1		
7	Spacer	3924989	2		
8	Connecting strip	3921123	2		
9	Shaft	3925001	1		
10	Cover plate	3925029	1		

Catenary drive unit, heavy-duty

Complete unit – XKEC_HL/HR/HLA/HRA

For SEW S47 gearmotor



Item	Description	Part No	Qty	Comments	Recommended Spare parts
1	0-unit (left-hand version)	XKEC 0 HL/HLA	1	See next page for details	
	0-unit (right-hand version)	XKEC 0 HR/HRA	1	See next page for details	
2	Sprocket wheel 5/8" including grub screw		1	See table below	X
3	Adapter plate including bolts and washers, reinforcement plate	3925035	1	For SEW S47 gearmotor	
	Adapter plate	3924455	1	Blind adapter plate	
4	Transmission chain 5/8" incl. connecting link	3925957	1	ISO/R- 1967- 08B- 1 (ISO)	X
	Transmission chain 5/8" incl. connecting link	5044980		ISO/R- 1967- 08A- 1 (ANSI)	X

Important

Items 2-4 must be ordered separately when ordering a 0-unit (item 1). The sprocket wheel (item 2) should be specified in accordance with the following table:

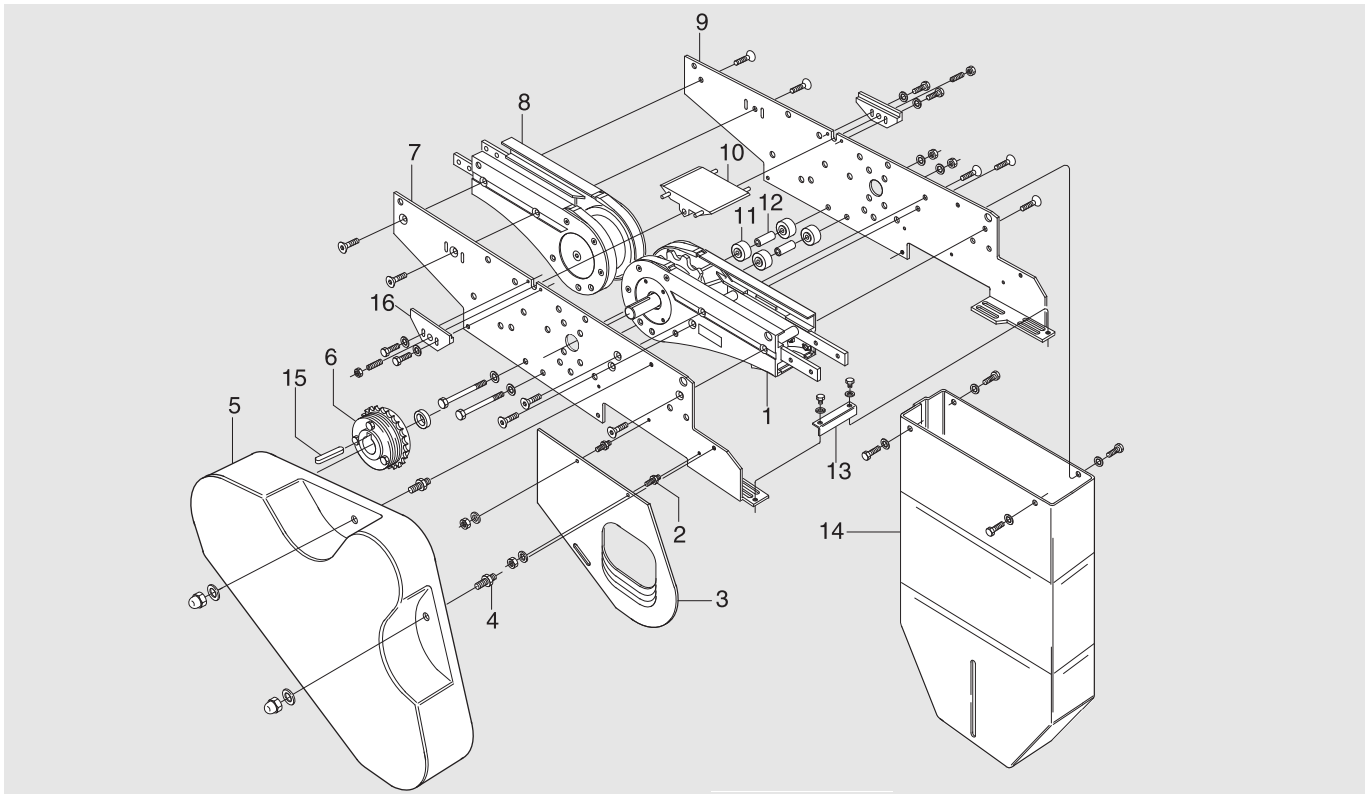
Sprocket wheel 5/8"	Part No (SEW)
z ₁ =15	3925259
z ₁ =17	3925260
z ₁ =19	3925261
z ₁ =21	3925262
z ₁ =23	3925263
z ₁ =25	3925264
z ₁ =15 ANSI	5044972
z ₁ =17 ANSI	5044973
z ₁ =19 ANSI	5044974
z ₁ =21 ANSI	5044975
z ₁ =23 ANSI	5044976
z ₁ =25 ANSI	5044977
z ₂ =25 ANSI	5045367

Adapter plate

Item 3 (adapter plate) includes an adapter plate reinforcement plate and two reinforcement strips for the connection of the drive unit to the conveyor beam.

Catenary drive unit, heavy-duty

0-unit – XKEC 0 HL/HR/HLA/HRA



Item	Description	Part No	Qty	Comments	Recommended Spare parts
1	Basic unit (left-hand version)	3925333	1	See Page 20 for details	
	Basic unit (right-hand version)	3925334	1	See Page 20 for details	
2*	Distance screw	(3904862)	2	See kit below	
3	Chain guard	3925069	1		
4*	Distance screw	(3904855)	2	See kit below	
5	Transmission cover	3925068	1		
6	Slip clutch Ø25 mm	5054001	1	ISO, 5/8"	X
	Slip clutch Ø25 mm	5054002	1	ANSI, 5/8"	X
7	Motor bracket L	3925027	1		
8	Idler unit	3925332	1	See Page 21 for details	
9	Motor bracket R	3925028	1		
10	Bridge	3905610	1		
11	Wheel	3920087	4		
12	Distance pipe	3920010	2		
13	Adjusting block	3924287	1		
14	Cover	3925336	1		
15	Thin parallel key	8x7-63	1	DIN 6885A h9	
16	Adjustment plate	5043154	2		
*) 2	Distance screw kit	5111600	1	Kit contains 10 pcs	
*) 4	Distance screw kit	5111599	1	Kit contains 10 pcs	

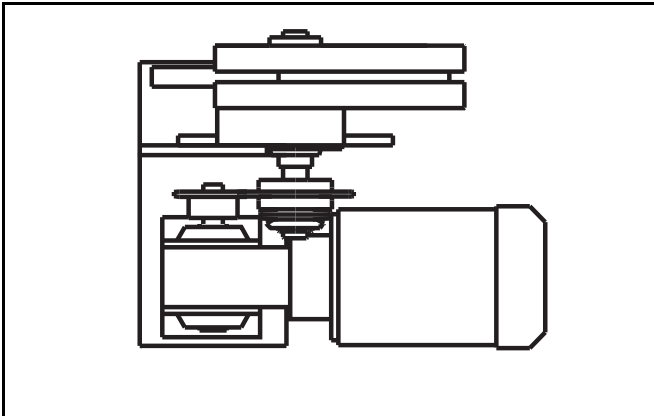
Spare parts Horizontal bend drive unit - XK



Technical information from FlexLink

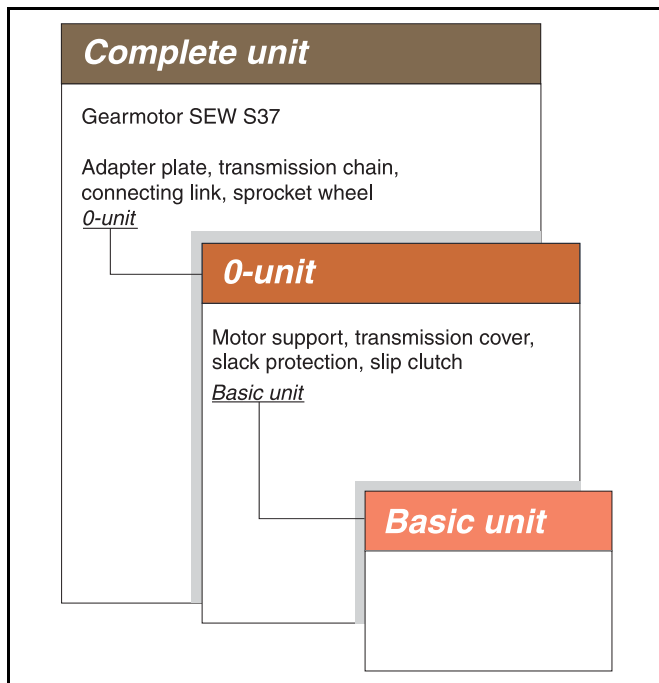
XK004-E1

Horizontal bend drive unit - XK



Revision list

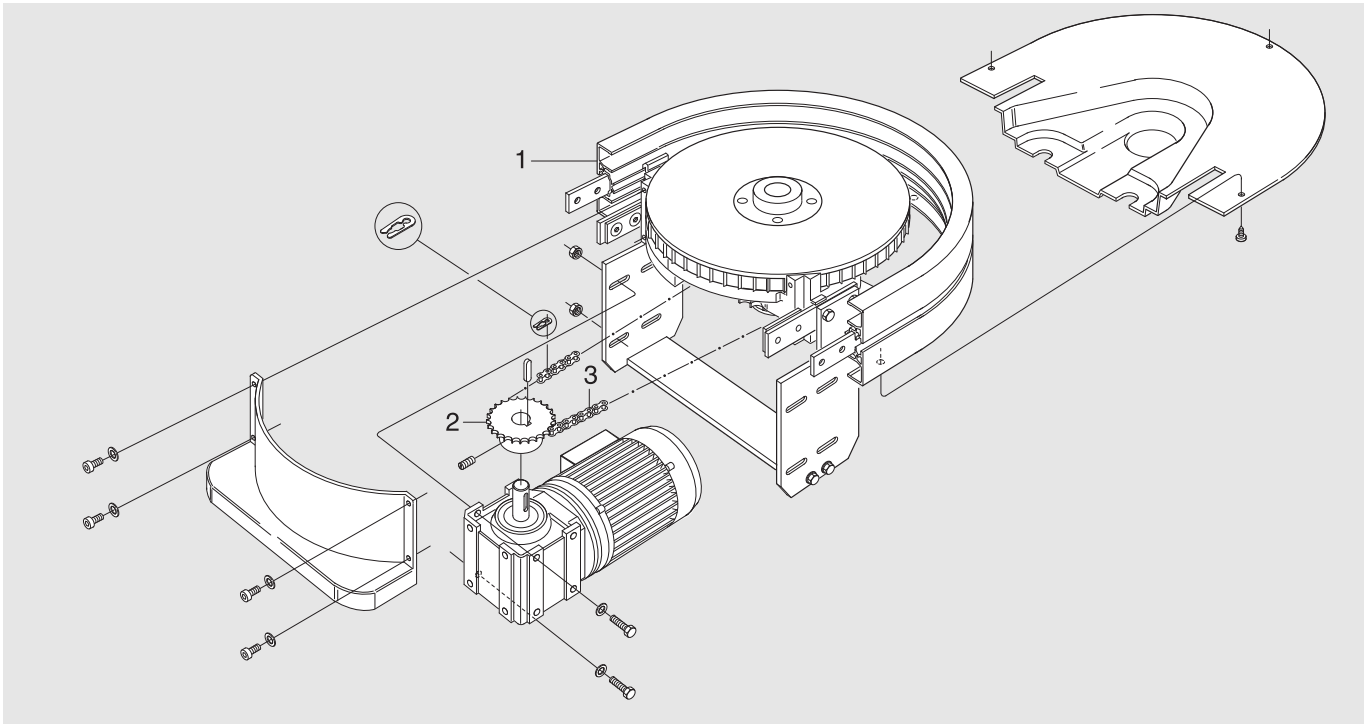
Document designation	Date	Type of revision	Entered by
XK004-E1	98-10-14	New version	Enator Inforum



Horizontal bend drive unit

Complete unit – XKEW 180/_H/HA

For SEW S37 gearmotor



Item	Description	Part No	Qty	Comments	Recommended Spare parts
1	0-unit	XKEW 180/0 H/HA	1	See next page for details	
2	Sprocket wheel 1/2" including grub screw		1	See table below	X
	Motor alternative, see Drive unit guide 5014				
3	Transmission chain 1/2" including connecting link	3921638	1	ISO/R- 1967- 08B- 1 (ISO)	X
	Transmission chain 1/2" including connecting link	5044948	1	ISO/R- 1967- 08A- 1 (ANSI)	X

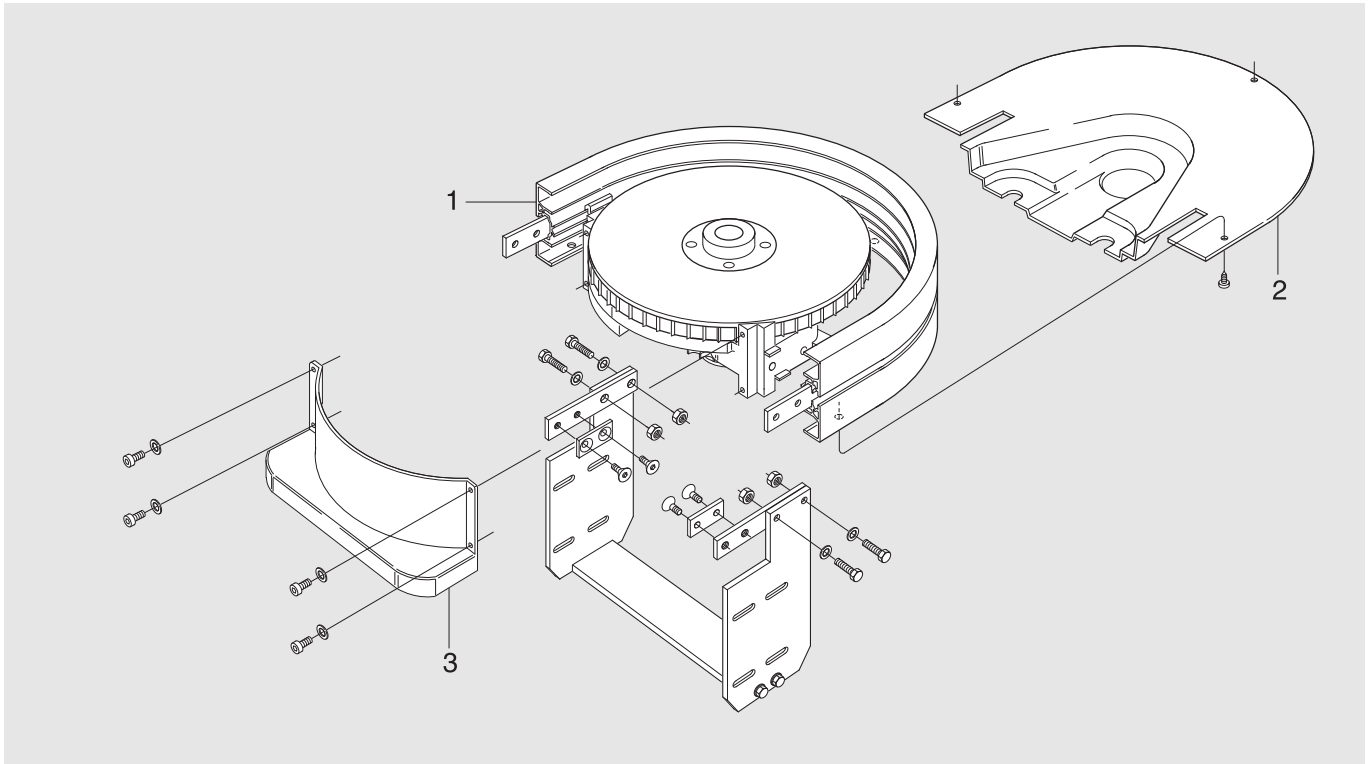
Important

Items 2-4 must be ordered separately when ordering a 0-unit (item 1). The sprocket wheel (item 2) should be specified in accordance with the following table:

Sprocket wheel 1/2"	Part No (SEW)
z ₁ =19	3924438
z ₁ =21	3924439
z ₁ =23	3924440
z ₁ =25	3921258
z ₁ =15 ANSI	5044935
z ₁ =17 ANSI	5044936
z ₁ =19 ANSI	5044937
z ₁ =21 ANSI	5044938
z ₁ =23 ANSI	5044939
z ₁ =25 ANSI	5044940

Horizontal bend drive unit

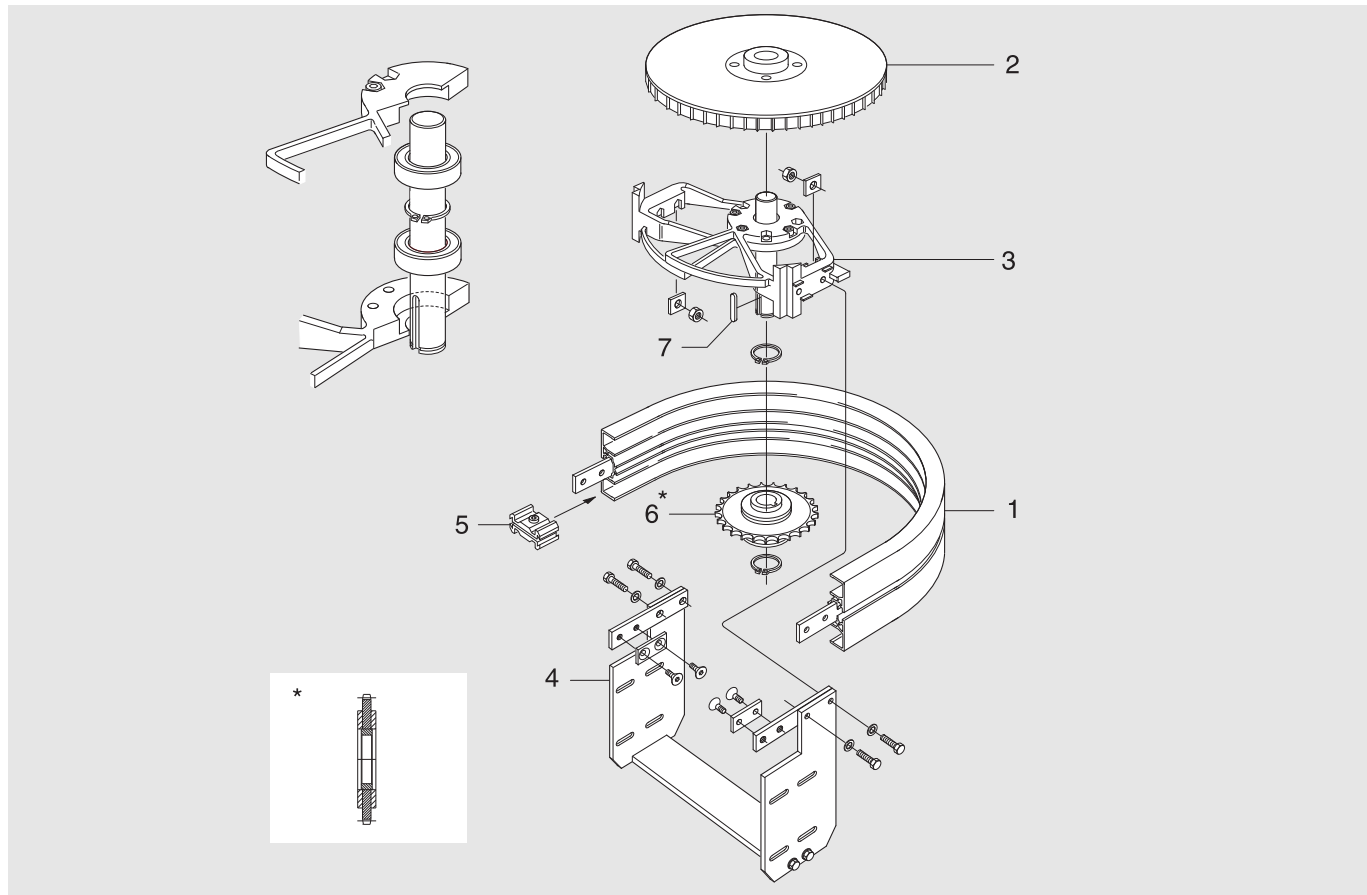
0-unit – XHEW 180/0 H/HA



Item	Description	Part No	Qty	Comments	Recommended Spare parts
1	Basic unit	XKEW 180/0 U	1	See next page for details	
2	Transmission cover	3925869	1		
3	Cover	3925868	1		

Horizontal bend drive unit

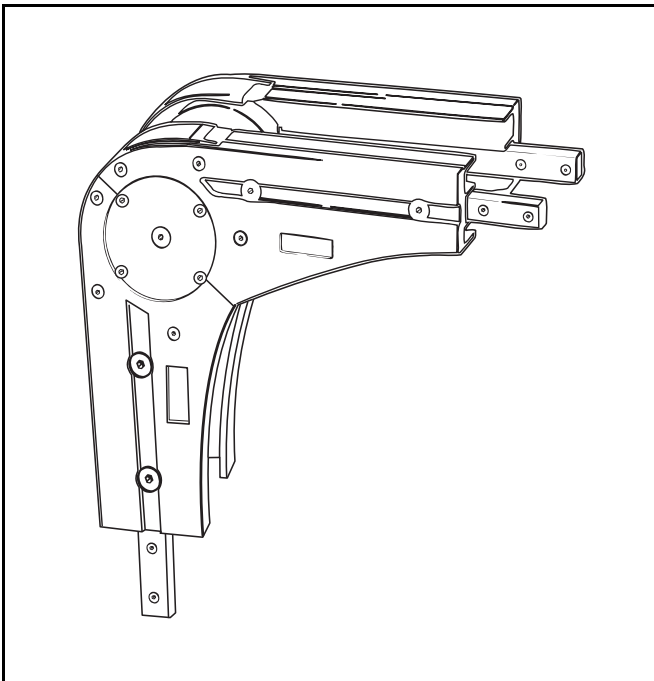
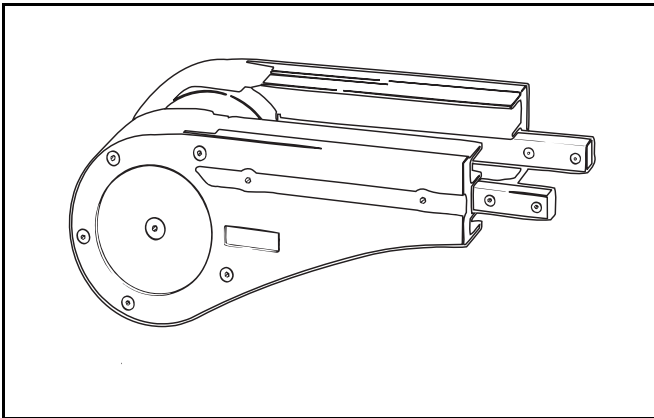
Basic unit – XKEW 180/0 U



Item	Description	Part No	Qty	Comments	Recommended Spare parts
1	Outer horizontal bend	XKBE 180R200	1		
2	Drive wheel	3925764	1		X
3	Bracket	3925995	1	Including shaft and bearing	
4	Motor bracket	3925996	1		
5	Joint piece	XKCE 55×30	2		
6	Slip clutch	5044902	1		X
7	Thin parallel key	8×7–50	1	DIN 6885 A h9	
* Spare part kits for slip clutch with friction discs:					
	Sprocket wheel, bushing and friction discs	3925289			
	Friction discs	5044945			



Idler unit - XK

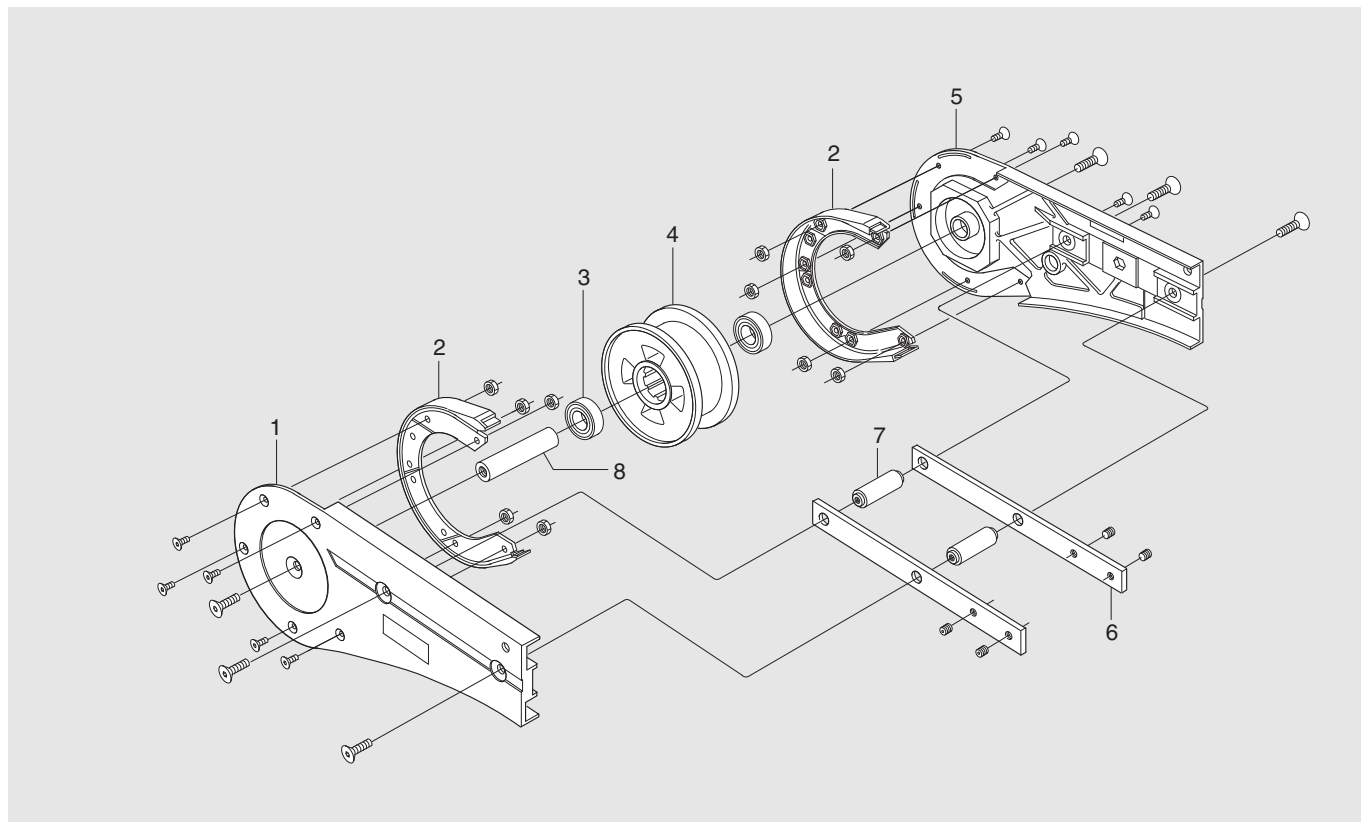


Revision list

Document designation	Date	Type of revision	Entered by
XK005-E1	98-10-14	New version	Enator Inforum
XK005-E2	00-05-15	P. 3 Part No changed	AerotechTelub
XK005-E3	08-10-23	Spare part kits added	JE
XK005-E4	09-03-19		JE
XK005-E5	10-02-12	Page 2 updated	JE

Idler unit

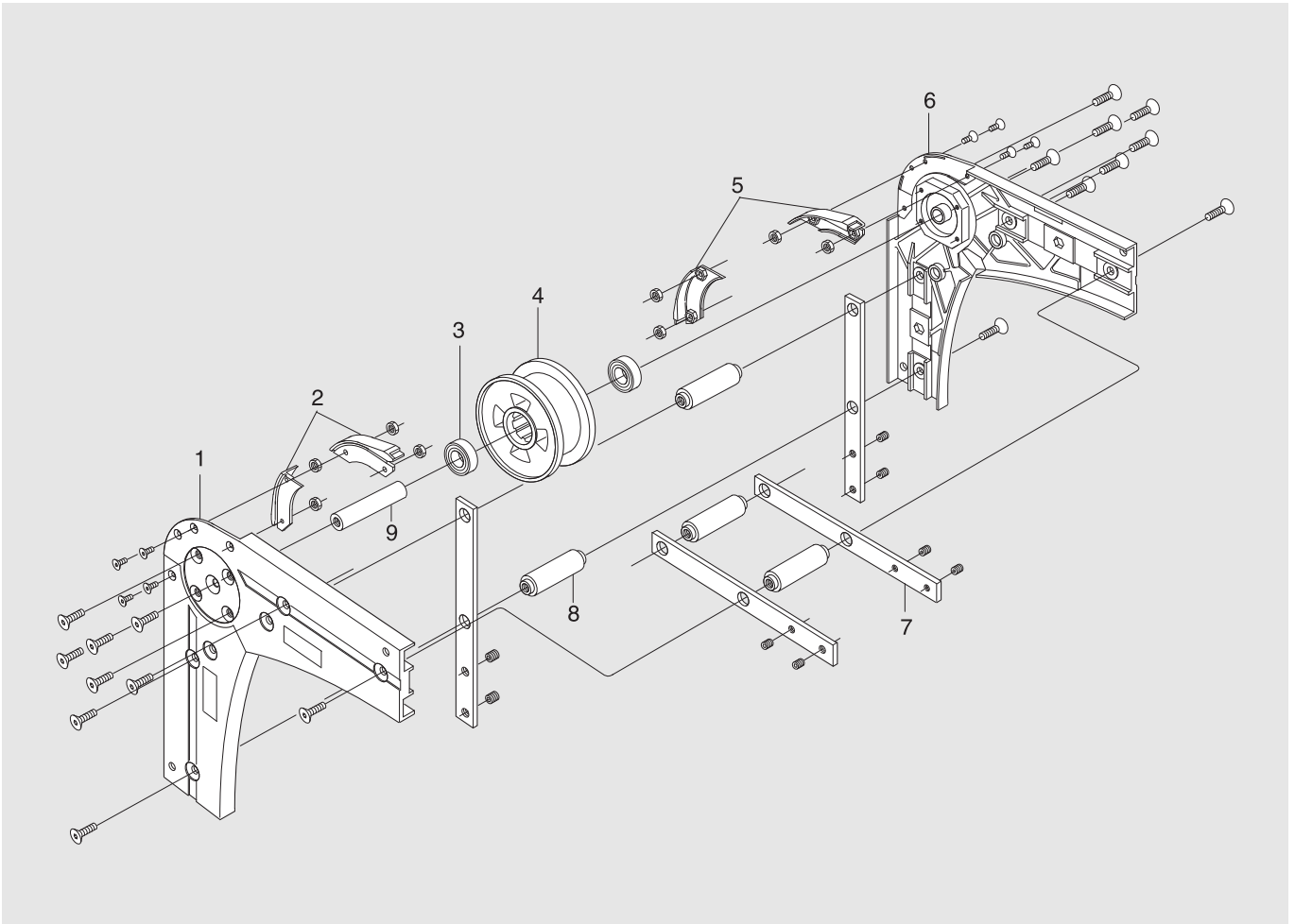
Idler end unit – XKEJ 350



Item	Description	Part No	Qty	Comments	Recommended Spare parts
1	Side plate R	3920208	1		
2	Steering guide	5051421	2		X
3	Bearing	6202-2Z	2		
4	Idler wheel	5111648	1		
5	Side plate L	3920207	1		
6	Connecting strip	3921123	2		
7	Spacer	3924989	2		
8	Shaft	3925001	1		

Idler unit

Idler bend unit – XKEK 90R70



Item	Description	Part No	Qty	Comments	Recommended Spare parts
1	Side plate R	3925863	1		
2	Spare parts kit Steering guide	5051421	1		X
3	Bearing	6202-2Z	2		
4*	Wheel	(3924757)	1	See kit below	
5	Spare parts kit Steering guide	See item 2	1		X
6	Side plate L	3925864	1		
7	Connecting strip	3921123	4		
8	Spacer	3924989	4		
9	Shaft	3925001	1		
*) 4	Wheel	5111648	1		X

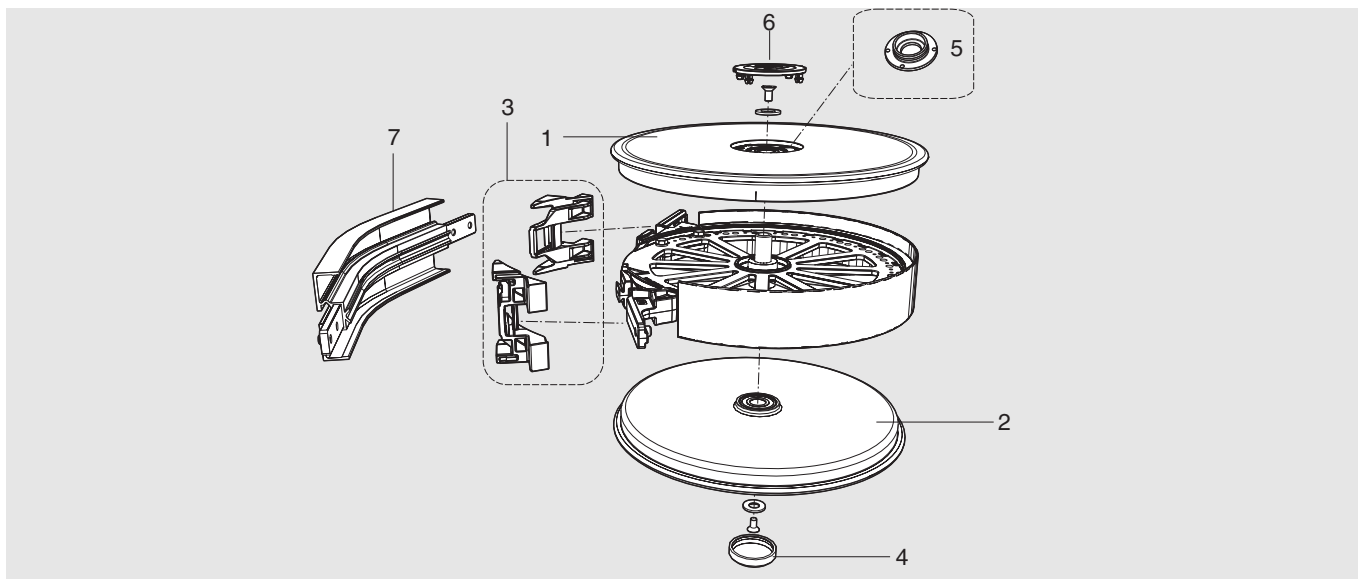


Wheel bends XSBH-, XLBH-, XBBH-, XMBH-, XHBH-, XKBH-, XTBH-

Revision list

Document designation	Date	Type of revision	Entered by
5392EN-1	07-12-05	Initial version	
5392EN-2	08-09-10		JE
5392EN-3	10-05-27		JE
5392EN-4	10-08-31	Added new column	CB

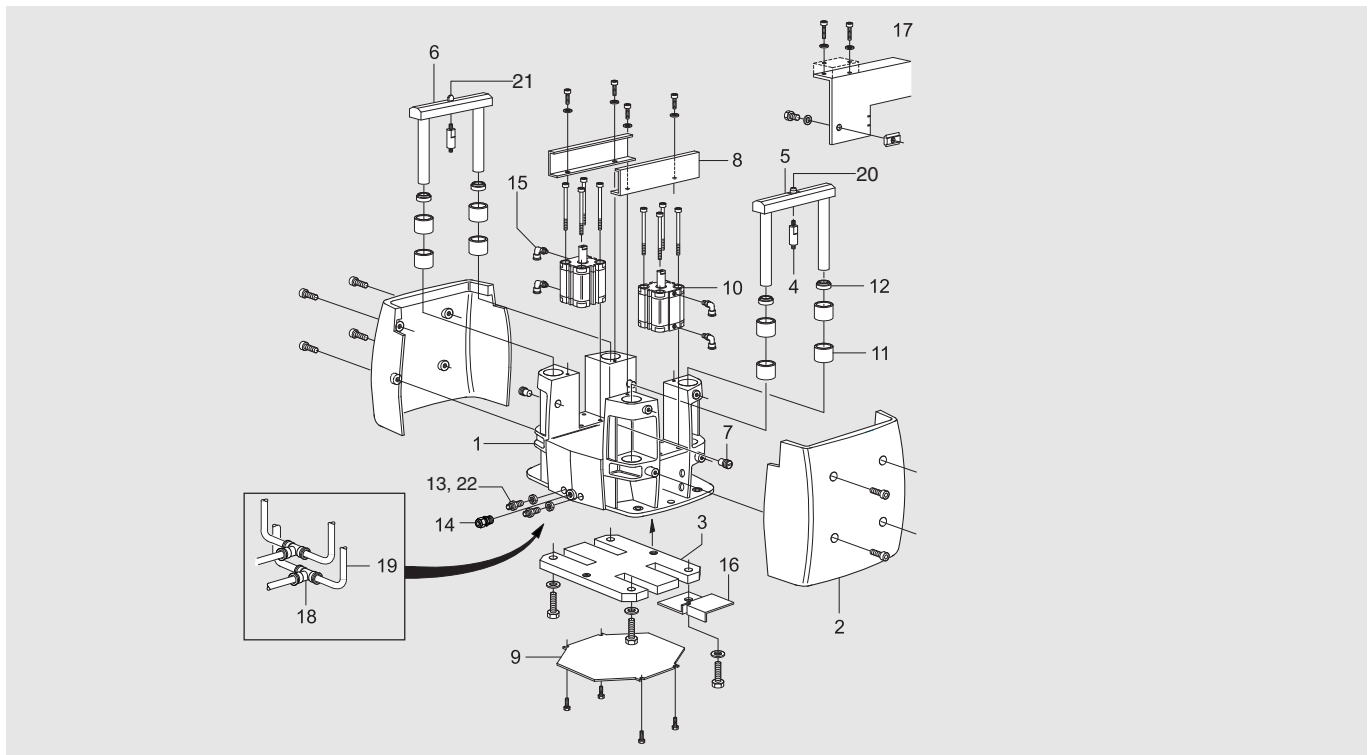
Complete wheel bend



Item	Description	Part no						Recommended Spare parts	
		XS	XL type A	X85	XM type A	XH type A	XK		XT
1	Wheel disc* (upper)	3902168	5059247	5059247	5059247	5059247	3924966	5059247	
2	Wheel disc* (lower)	3902168	5059244	5059244	5059244	5059244	3924966	5059244	
3	Guides**	n.a.	5059235	5110507	5059236	5059237	n.a.	n.a.	X
4	Wheel cover	3901120	3901120	3901120	3901120	3901120	n.a.	3901120	
5	Adapter kit	n.a.	5058559	5058559	5058559	5058559	n.a.	5058559	
6	Wheel cover	5057697	5057697	5057697	5057697	5057697	n.a.	5057697	
7	Outer bend	XSBE 30R150	XLBE 30R150	XBBE 30A85R160	XMBE 30R160	XHBE 30R170	XKBE 30R200		
7	Outer bend	XSBE 45R150	XLBE 45R150	XBBE 45A85R160	XMBE 45R160	XHBE 45R170	XKBE 45R200		
7	Outer bend		XLBE 60R150		XMBE 60R160	XHBE 60R170			
7	Outer bend	XSBE 90R150	XLBE 90R150	XBBE 90A85R160	XMBE 90R160	XHBE 90R170	XKBE 90R200		
7	Outer bend	XSBE 180R150	XLBE 180R150	XBBE 180A85R160	XMBE 180R160	XHBE 180R170	XKBE 180R200		
7	Outer bend			XBBE EA85R160					
*	Including bearings								
**	One pair								

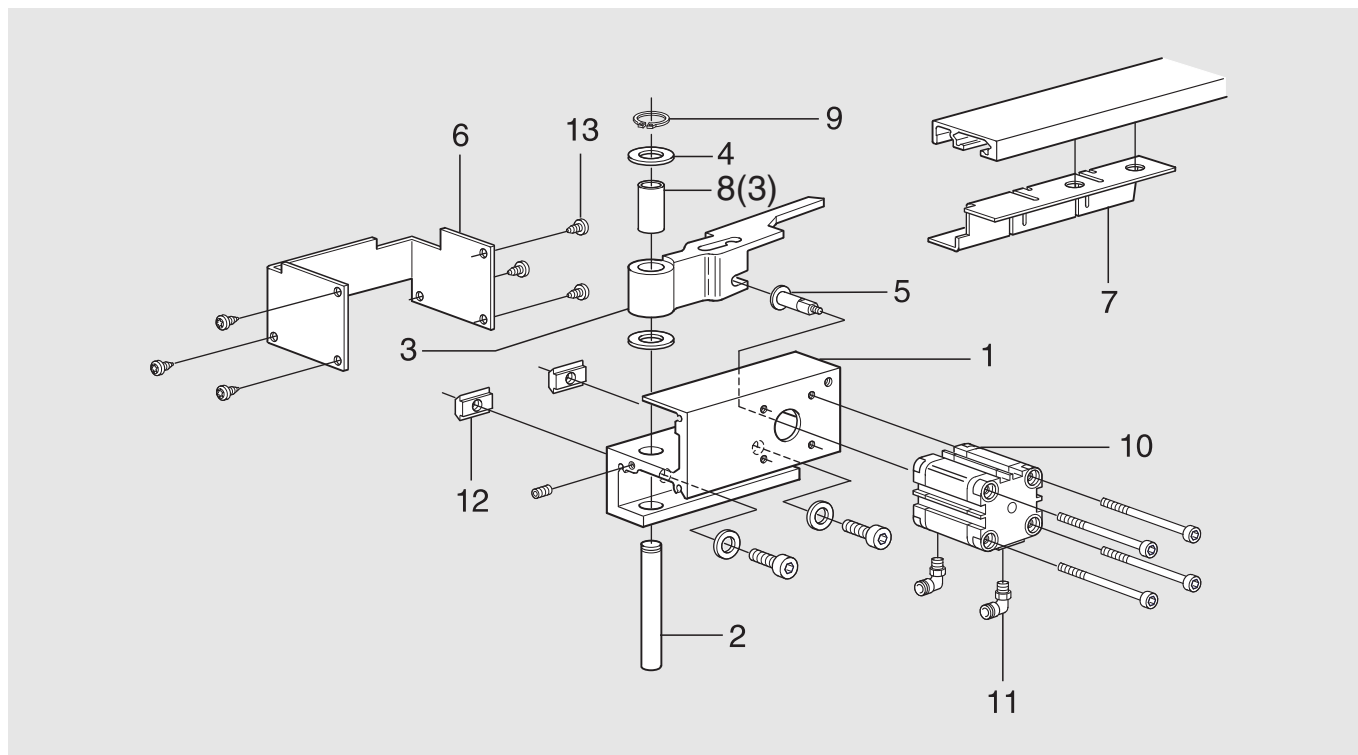


Pallet locating station and pallet stop, type A, XKPX 175 A



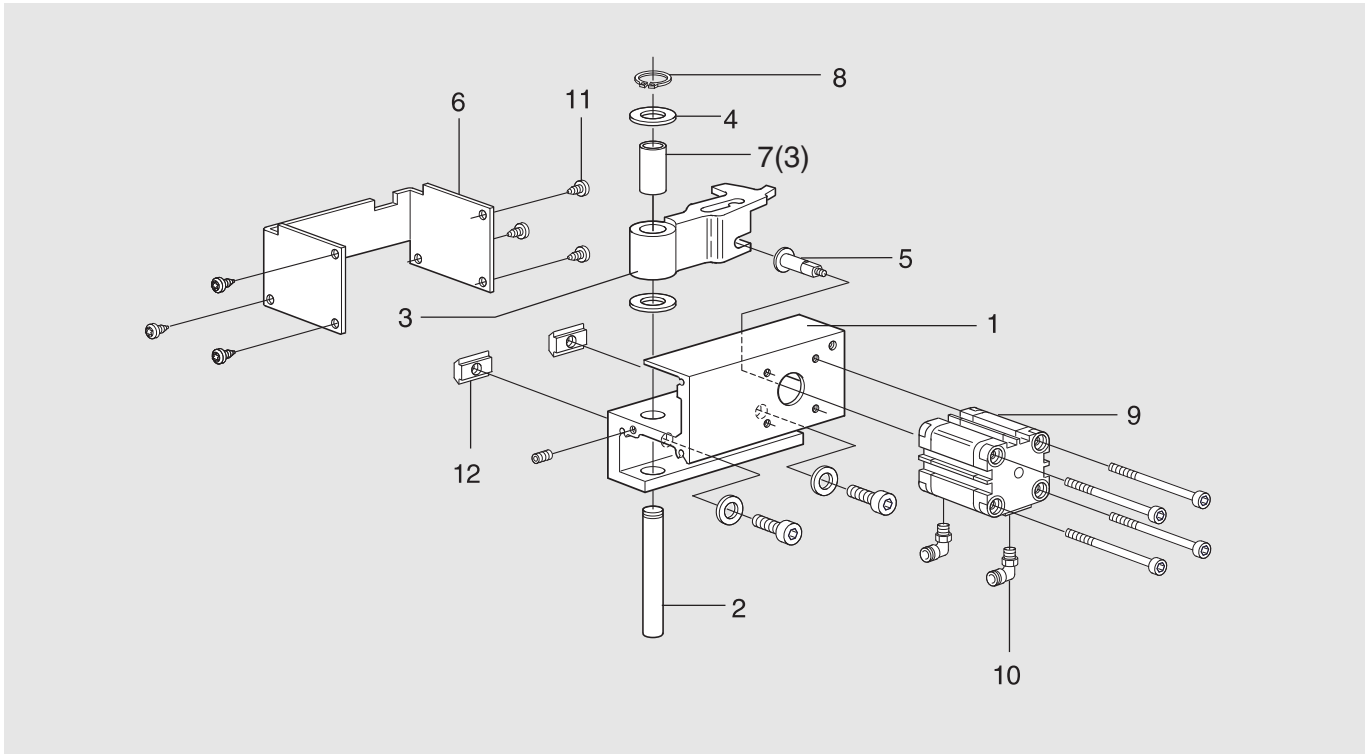
Item	Description	Part No	Qty	Comments	Recommended Spare parts
1	Frame	3926590	1		
2	Cover	3926591	2		
3	Plate	3926593	1		
4	Axle peg	3926596	2	Loctite or similar	
5	Ruler assy	3927411	1	Includes item 20	
6	Ruler assy	3927412	1	Includes item 21	
7	Guide screw	3926599	4		
8	Shield	5044839	2		
9	Cover	3927340	1		
10	Pneumatic cylinder	ADVU-40-25-P-A	2	Festo	X
11	Bushing	SS 2991 777 25/30x20	8		
12	Rod wiper	8825-25-35-7-10 NBR/101	4	Simrit	
13	Bulkhead connector	QSSF-1/8-6-B	2	Festo	
14	Cable fitting	ELFA 55-019-60	1	PG 11	
15	L-fitting	QSML-1/8-6	4		
16	Sensor plate	5044851	1	Incl. screws and washers	
17	Attachment	5044799	1	Incl. screws and washers	
18	T-connector	QSMT-6	2	Festo	
19	Plastic tubing	PUN-6x1	1	L=0,5 m Festo	
20	Locating pin (round)	5056122	1	(also included in item 5)	
21	Locating pin (flattened)	5056123	1	(also included in item 6)	
22	Check valve	GRLA-1/8-QS-6-D	2		

Pallet locating station and pallet stop, type A/B, XKPD 32x15 LA/LB



Item	Description	Part No	Qty	Comments	Recommended Spare parts
1	Attachment	5044790	1		
2	Shaft	3926473	1		
3	Arm	3927339	1	Includes item 8	
4	Washer	3926474	2		
5	Piston rod end	3921314	1	Loctite or similar	
6	Cover	3927138	1		
7	Cover	3927137	1		
8	Radial bearing	GLY.PG 1618 25 F	1	See item 3	
9	Retaining ring	SgA 16	1		
10	Pneumatic cylinder	ADVU 32-15-P-A	1	Festo (XKPD 32x15 LA)	X
	Pneumatic cylinder	AEVUZ 32-15-P-A	1	Festo (XKPD 32x15 LB)	
11	L-fitting	QSML-1/8-6	2	Festo	
12	Slot nut	XCAN 8	2		
13	Screw	RXS-Z ST 4,2x6,5	6	Loctite or similar	

Pallet stop device, type A/B, XKPD 32x15 A/B

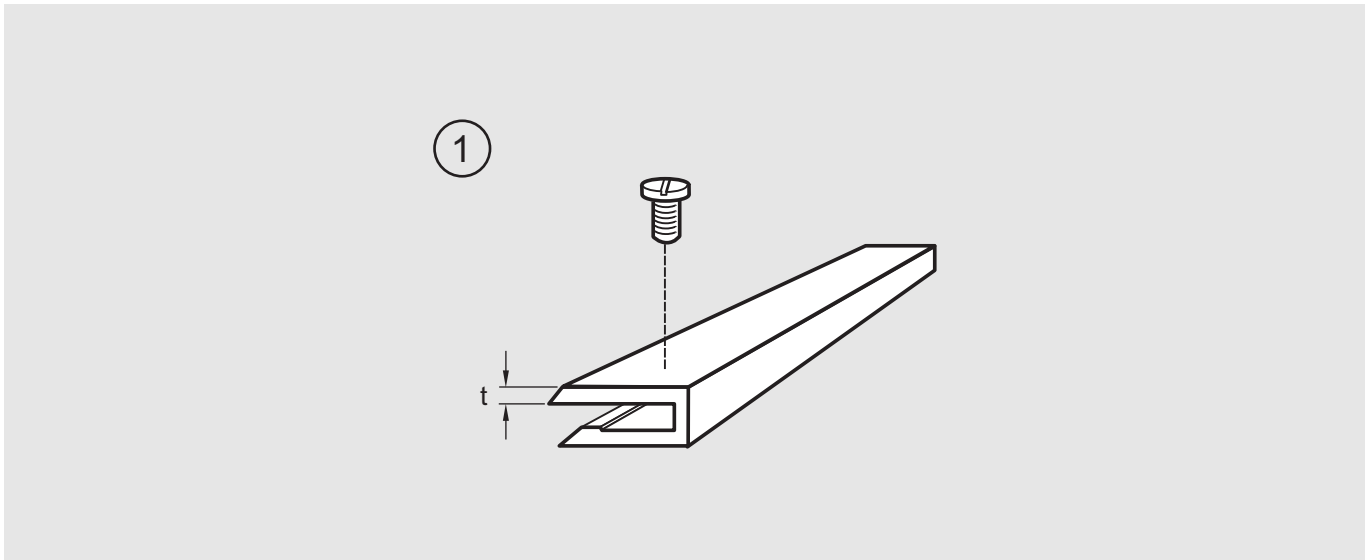


Item	Description	Part No	Qty	Comments	Recommended Spare parts
1	Attachment	5044790	1		
2	Shaft	3926473	1		
3	Arm	5053762	1	Includes item 7	
4	Washer	3926474	2		
5	Piston rod end	3921314	1	Loctite or similar	
6	Cover	3927002	1		
7	Radial bearing	GLY. PG 161825 F	1	See item 3	
8	Retaining ring	SgA 16	1		
9	Pneumatic cylinder	ADVU 32-15-P-A	1	Festo (XKPD 32x15 LA)	X
	Pneumatic cylinder	AEVUZ 32-15-P-A	1	Festo (XKPD 32x15 LB)	
10	L-fitting	QSML -1/8-6	2	Festo	
11	Screw	RXS-Z ST 4,2x6,5	6	Loctite or similar	
12	Slot nut	XCAN 8	2		



Spare parts Slide rail - XK

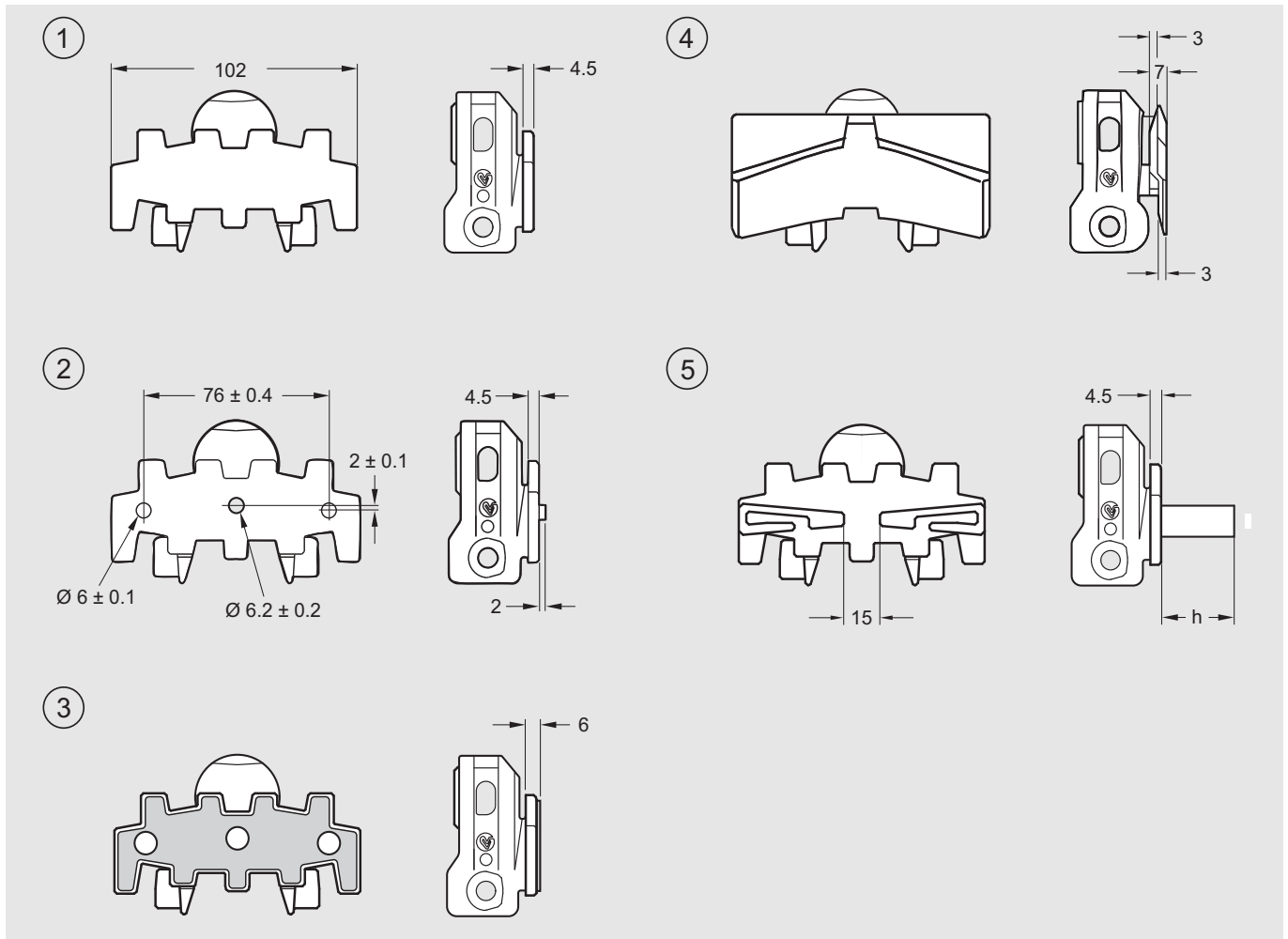
Slide rail – XK



Item	Description	Part No	Qty	Comments	Recommended Spare parts
1	Plastic slide rails for XK beams				X
	PVDF ($\mu=0,15-0,35$) (Transparent white) (t=2,5)	XWCR 25 P			
	UHMW-PE ($\mu=0,1-0,25$) (White) (t=2,6)	XKCR 25 U			
	PA-PE ($\mu=0,1-0,25$) (Grey) (t=2,45)	XKCR 25 H			



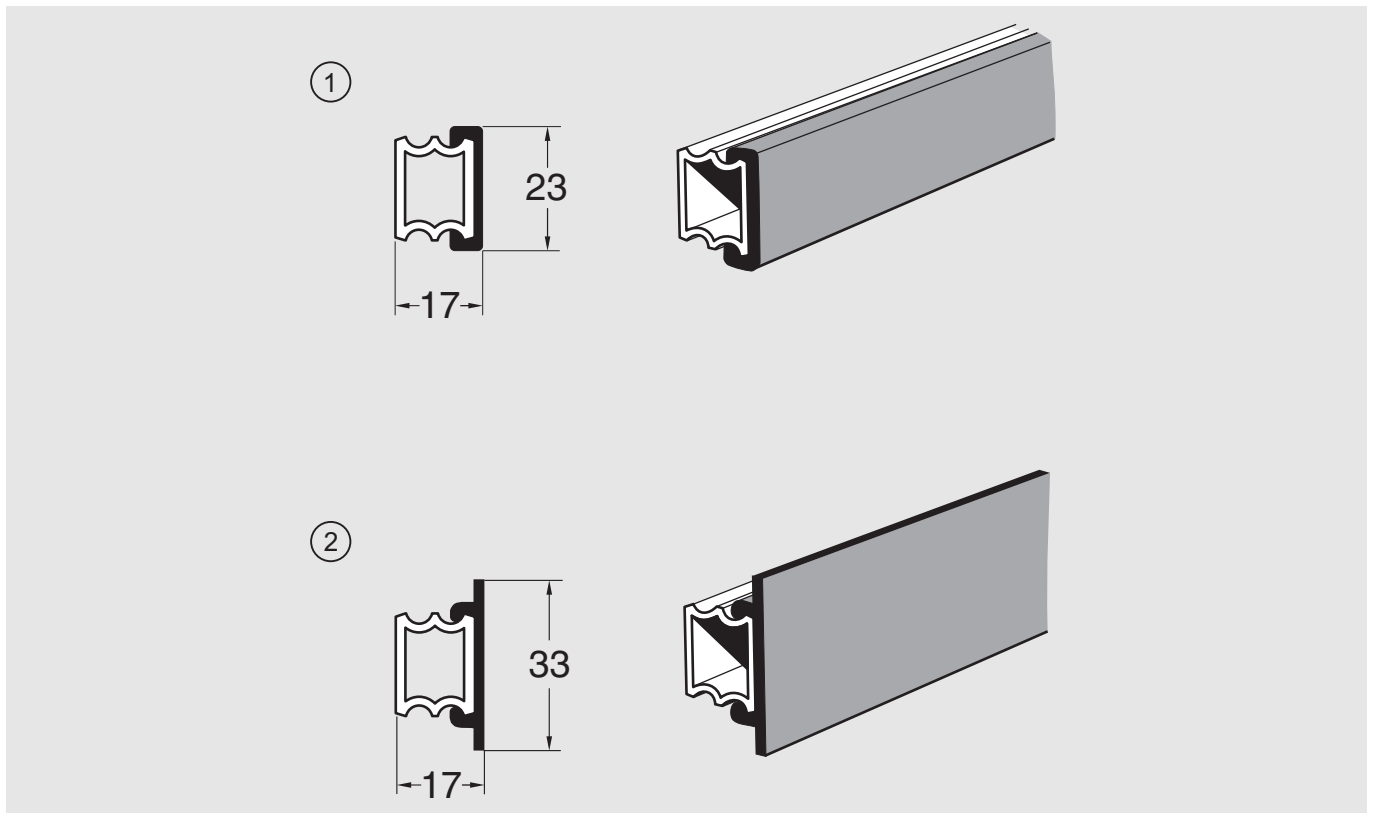
Spare parts Chains - XK



Item	Description	Part No	Qty	Comments	Recommended Spare parts
1	Plain chain	XKTP 5		This chain must not be used in pallet applications. For this, please use closed top chain XKTP 5 A	X
	Plain link kit	5056639		Link kit contains 10 links, 10 pivots, 10 steel pins	
	Plain chain (Ultra low wear)	XKTP 5 C			
	Plain link (Ultra low wear)	n.a.			
2	Universal chain	XKTF 5 U#		Enter cleat frequency (1–10) instead of # in product designation	X
	Universal link kit	5056642		Link kit contains 10 links, 10 pivots, 10 steel pins	
3	Steel top chain	XKTP 5 TF			X
	Steel top link kit	5056644		Link kit contains 10 links, 10 pivots, 10 steel pins	
4	Closed top chain	XKTP 5 A			X
	Closed top link kit	5056641		Link kit contains 10 links, 10 pivots, 10 steel pins	
5	Cleated chain, Type A			Enter cleat frequency (1–10) instead of # in product designation	X
	h=15 mm	XKTF 5x15 A#			
	h=20 mm	XKTF 5x20 A#			
	h=30 mm	XKTF 5x30 A#			
	h=40 mm	XKTF 5x40 A#			
	Cleated link kit				
	h=15 mm	5056645		Link kit contains 10 links, 10 pivots, 10 steel pins	
	h=20 mm	5056646		Link kit contains 10 links, 10 pivots, 10 steel pins	
	h=30 mm	5056647		Link kit contains 10 links, 10 pivots, 10 steel pins	
	h=40 mm	5056648		Link kit contains 10 links, 10 pivots, 10 steel pins	



Spare parts Guide rail cover - XK



Item	Description	Part No	Qty	Comments	Recommended Spare parts
1	Guide rail cover for 15 mm aluminium guide rail				X
	Polyethylene, length 3 m	XLRT 3x23			
	UHMW-PE, length 3 m	XLRT 3x23 U			
2	Guide rail cover, flanged, for 15 mm aluminium guide rail				X
	Polyethylene, length 3 m, flanged	XLRT 3x33 D			

Product designations in alphanumeric order

Part no	Page	Part no	Page	Part no	Page	Part no	Page
(3904855)	10	3920084	8	3924440	26	3925261	5
(3904855)	13	3920087	19	3924455	12	3925262	22
(3904855)	16	3920087	23	3924455	15	3925262	5
(3904855)	19	3920088	7	3924455	18	3925263	22
(3904855)	23	3920207	21	3924455	2	3925263	5
(3904855)	3	3920207	30	3924455	22	3925264	22
(3904855)	6	3920208	21	3924455	5	3925264	5
(3904862)	10	3920208	30	3924455	9	3925289	28
(3904862)	13	3921123	14	3924966	33	3925325	10
(3904862)	16	3921123	20	3924966	33	3925325	13
(3904862)	19	3921123	21	3924989	14	3925325	16
(3904862)	23	3921123	30	3924989	20	3925325	3
(3904862)	3	3921123	31	3924989	21	3925325	6
(3904862)	6	3xmlx921123	4	3924989	30	3925332	19
(3920209)	14	3921258	12	3924989	31	3925332	23
(3920209)	4	3921258	15	3924989	4	3925333	19
(3920210)	14	3921258	18	3925001	21	3925333	23
(3920210)	4	3921258	2	3925001	30	3925334	19
(3924757)	21	3921258	26	3925001	31	3925334	23
(3924757)	31	3921314	36	3925024	13	3925336	19
(3924763)	14	3921314	37	3925024	3	3925336	23
(3924763)	4	3921638	12	3925024	6	3925469	16
(3924764)	14	3921638	15	3925025	13	3925718	16
(3924764)	4	3921638	18	3925025	3	3925764	28
(3925066)	20	3921638	2	3925025	6	3925863	31
(3925067)	20	3921638	26	3925027	19	3925864	31
(3925589)	13	3924197	15	3925027	23	3925868	27
(3925589)	16	3924197	18	3925028	19	3925869	27
(3925589)	3	3924197	2	3925028	23	3925921	8
(3925589)	6	3924197	9	3925029	20	3925957	22
(3925590)	13	3924287	10	3925029	21	3925957	5
(3925590)	16	3924287	19	3925035	22	3925995	28
(3925590)	3	3924287	23	3925035	5	3925996	28
(3925590)	6	3924287	3	3925063	20	3926279	13
(3925718)	8	3924287	6	3925063	4	3926299	14
(3926375)	10	3924438	12	3925068	10	3926310	12
(5048340)	8	3924438	15	3925068	13	3926310	13
3901120	33	3924438	18	3925068	16	3926360	16
3901120	33	3924438	2	3925068	19	3926361	16
3901120	33	3924438	26	3925068	23	3926400	10
3901120	33	3924439	12	3925068	3	3926401	10
3901120	33	3924439	15	3925068	6	3926402	10
3901120	33	3924439	18	3925069	19	3926473	36
3902168	33	3924439	2	3925069	23	3926473	37
3902168	33	3924439	26	3925259	22	3926474	36
3905610	19	3924440	12	3925259	5	3926474	37
3905610	23	3924440	15	3925260	22	3926590	35
3920010	19	3924440	18	3925260	5	3926591	35
3920010	23	3924440	2	3925261	22	3926593	35

Part no	Page	Part no	Page	Part no	Page	Part no	Page
3926596	35	5044948	12	5056641	44	5111599	6
3926599	35	5044948	15	5056642	44	5111600	10
3927002	37	5044948	18	5056644	44	5111600	13
3927137	36	5044948	2	5056645	44	5111600	16
3927138	36	5044948	26	5056646	44	5111600	19
3927339	36	5044972	22	5056647	44	5111600	23
3927340	35	5044972	5	5056648	44	5111600	3
3927411	35	5044973	22	5056817	10	5111600	6
3927412	35	5044973	5	5056817	13	5111633	10
5043154	19	5044974	22	5056817	16	5111648	21
5043154	23	5044974	5	5056817	19	5111648	30
5044695	16	5044975	22	5056817	3	5111648	31
5044790	36	5044975	5	5056820	10	5111649	20
5044790	37	5044976	22	5056820	13	5111650	13
5044799	35	5044976	5	5056820	16	5111650	16
5044839	35	5044977	22	5056820	19	5111650	3
5044851	35	5044977	5	5056820	3	5111650	6
5044902	28	5044980	22	5057697	33	5111651	14
5044935	12	5044980	5	5057697	33	5111651	4
5044935	15	5045367	22	5057697	33	5111652	14
5044935	18	5045367	5	5057697	33	5111652	4
5044935	2	5046977	16	5057697	33	5111653	8
5044935	26	5046985	16	5057697	33	XBBE	
5044936	12	5047050	16	5058559	33	180A85R160	33
5044936	15	5051421	14	5058559	33	XBBE	
5044936	18	5051421	20	5058559	33	30A85R160	33
5044936	2	5051421	21	5058559	33	XBBE	
5044936	26	5051421	30	5058559	33	45A85R160	33
5044937	12	5051421	31	5059235	33	XBBE	
5044937	15	5051421	4	5059236	33	90A85R160	33
5044937	18	5053762	37	5059237	33	XBBE EA85R160	33
5044937	2	5053981	10	5059244	33	XCAN 8	36
5044937	26	5053981	13	5059244	33	XCAN 8	37
5044938	12	5053981	16	5059244	33	XHBE 180R170	33
5044938	15	5053981	19	5059244	33	XHBE 30R170	33
5044938	18	5053981	3	5059244	33	XHBE 45R170	33
5044938	2	5054000	10	5059247	33	XHBE 60R170	33
5044938	26	5054000	13	5059247	33	XHBE 90R170	33
5044939	12	5054000	16	5059247	33	XKBE 180R200	28
5044939	15	5054000	19	5059247	33	XKBE 180R200	33
5044939	18	5054000	3	5059247	33	XKBE 30R200	33
5044939	2	5054001	23	5110507	33	XKBE 45R200	33
5044939	26	5054001	6	5111598	8	XKBE 90R200	33
5044940	12	5054002	23	5111599	10	XKCE 55x30	28
5044940	15	5054002	6	5111599	13	XKCR 25 H	41
5044940	18	5054003	8	5111599	16	XKCR 25 U	41
5044940	2	5056122	35	5111599	19	XKEB 0 HL/HLA	5
5044940	26	5056123	35	5111599	23	XKEB 0 HLDU-	16
5044945	28	5056639	44	5111599	3	XKEB 0 HLU	10

<http://www.flexlink.com>

Part no	Page	Part no	Page
XKEB 0 HLU	3	XMBE 90R160	33
XKEB 0 HLU	6	XSBE 180R150	33
XKEB 0 HLU	8	XSBE 30R150	33
XKEB 0 HR/HRA	5	XSBE 45R150	33
XKEB 0 HRDU–	16	XSBE 90R150	33
XKEB 0 HRU	10	XWCR 25 P	41
XKEB 0 HRU	3		
XKEB 0 HRU	6		
XKEB 0 HRU	8		
XKEB 0 L/LA	2		
XKEB 0 LD/LAD–	15		
XKEB 0 LD/LAD106	12		
XKEB 0 LDU106	13		
XKEB 0 LP	7		
XKEB 0 R/RA	2		
XKEB 0 RD/RAD–	15		
XKEB 0 RD/RAD106	12		
XKEB 0 RDU106	13		
XKEB 0 RP	7		
XKEC 0 HL/HLA	22		
XKEC 0 HR/HRA	22		
XKEC 0 L/LA	18		
XKEC 0 R/RA	18		
XKEH 0 L/LA	9		
XKEH 0 R/RA	9		
XKEW 180/0 H/HA	26		
XKEW 180/0 U	27		
XKTF 5 U#	44		
XKTF 5x15 A#	44		
XKTF 5x20 A#	44		
XKTF 5x30 A#	44		
XKTF 5x40 A#	44		
XKTP 5	44		
XKTP 5 A	44		
XKTP 5 C	44		
XKTP 5 TF	44		
XLBE 180R150	33		
XLBE 30R150	33		
XLBE 45R150	33		
XLBE 60R150	33		
XLBE 90R150	33		
XLRT 3×23 U	45		
XLRT 3×33 D	45		
XMBE 180R160	33		
XMBE 30R160	33		
XMBE 45R160	33		
XMBE 60R160	33		

This page is intentionally left blank

For the latest technical documents visit www.flexlink.com to download product catalogues, manuals and instructions. Register for a MyFlexLink account and get 24/7 access to CAD drawings, engineering tools and order online.

www.flexlink.com

Australia

FlexLink Systems Pty Ltd
Mount Waverley VIC
☎ +61-3-9542 4400
info.au@flexlink.com

Belgium

FlexLink Systems N.V.
Leuven
☎ +32-(0)16-40 82 66
info.be@flexlink.com

Brazil

FlexLink Systems Ltda
Barueri SP
☎ +55 11 4196-3400
info.br@flexlink.com

Canada

FlexLink Systems Canada, Inc.
Burlington, ON
☎ +1-888-748-8677
info.ca@flexlink.com

China

FlexLink Automation
Shanghai
☎ +86-(0)21-641 183 06
info.cn@flexlink.com

Czech Republic

FlexLink Systems
Praha
☎ +420-721 858 123
info.cz@flexlink.com

Finland

FlexLink Systems
Helsinki
☎ +358-9-788 832
info.fi@flexlink.com

France

FlexLink Systems SAS
Elancourt cedex
☎ + 33-(0)1 30 68 53 50
info.fr@flexlink.com

Germany

FlexLink Systems GmbH
Offenbach
☎ +49-69-83832 0
info.de@flexlink.com

Hungary

FlexLink Systems Kft.
Budapest
☎ +36-1-3994 295
info.hu@flexlink.com

India

FlexLink Systems India Pvt. Ltd.
Gurgaon
☎ +91-124 427 8844
info.in@flexlink.com

Indonesia

PT FlexLink Systems
Jakarta
☎ +62 21 3904335
info.id@flexlink.com

Italy

FlexLink Systems S.p.A.
Cascine Vica
☎ +39-011-9518 411
info.it@flexlink.com

Japan

FlexLink Systems K.K.
Tokyo
☎ +81-(0)3-3297 0761
info.jp@flexlink.com

Malaysia

FlexLink Automation Sdn Bhd
Shah Alam
☎ +603-7859 1889
info.my@flexlink.com

The Netherlands

FlexLink Systems B.V.
Hoofddorp
☎ +31-(0)23-554 31 00
info.nl@flexlink.com

Poland

FlexLink Systems Polska Sp. z o.o.
Sady
☎ +48-61-654 7650
info.pl@flexlink.com

Russia

FlexLink Systems LLC
St. Petersburg
☎ +7-(812)-448-32-31
info.ru@flexlink.com

Singapore

FlexLink Systems Pte Ltd
Singapore
☎ +65-6890 6735
info.sg@flexlink.com

Spain

FlexLink Systems España, S.L.
Barcelona
☎ +34-93-680 41 00
info.es@flexlink.com

Sweden

FlexLink Systems AB
Göteborg
☎ +46-(0)31-337 31 00
info.se@flexlink.com

Thailand

FlexLink Systems Pte Ltd
Bangkok
☎ +66-2-694 1717
info.th@flexlink.com

United Kingdom

FlexLink Systems Ltd
Milton Keynes
☎ +44-(0)1908-327 200
info.uk@flexlink.com

USA

Main office
FlexLink Systems, Inc.
Allentown, PA
☎ +1 (610) 973-8200
info.us@flexlink.com

South

FlexLink Systems, Inc.
Greenville, SC
☎ +1 (864) 335-0550

West

FlexLink Systems, Inc.
Plano, TX
☎ +1 (972) 312-9504

Your business partner: